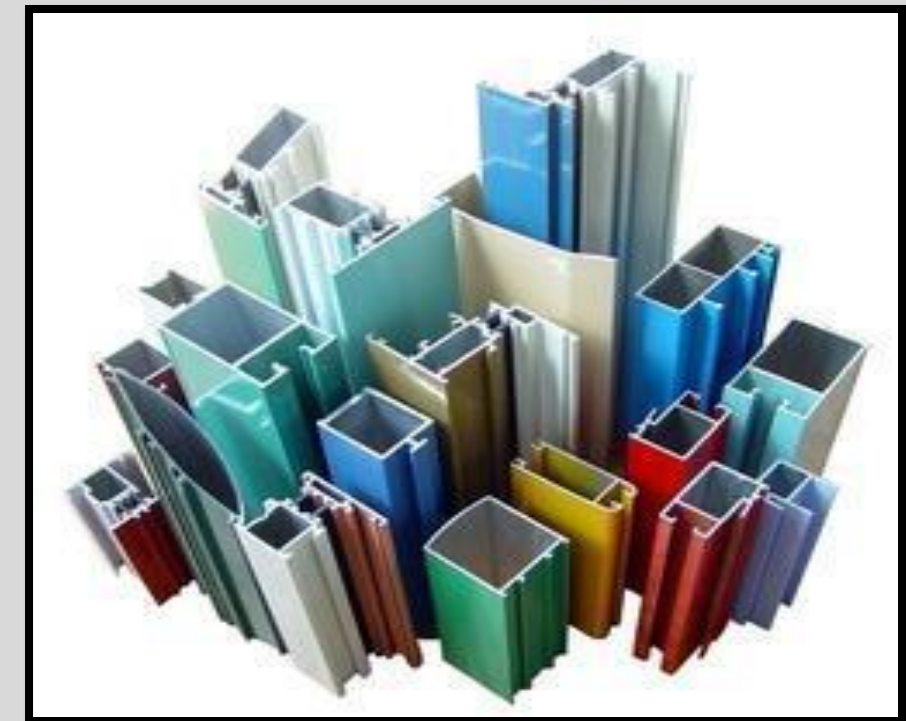
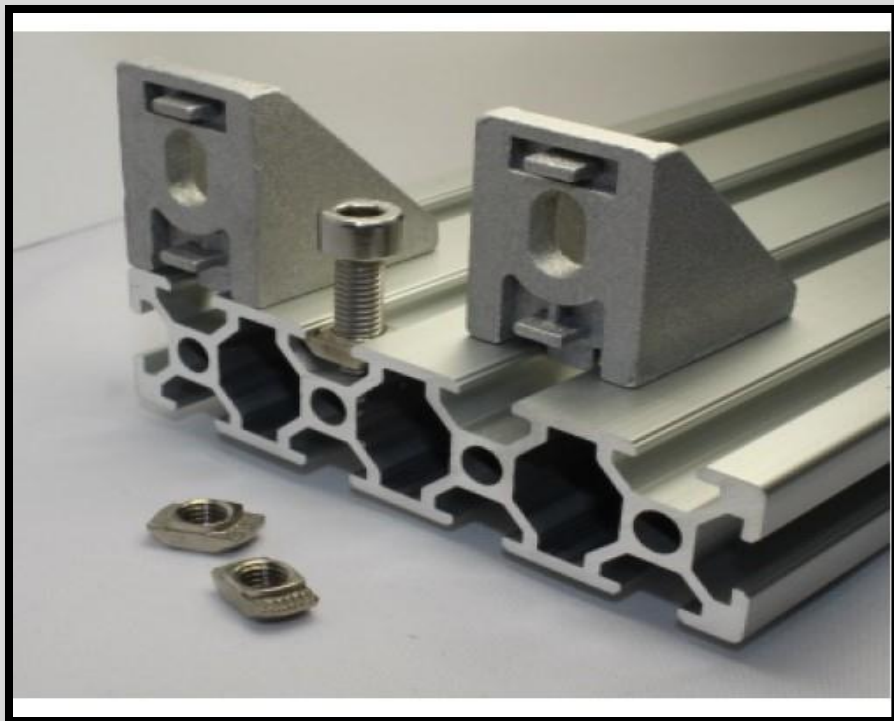
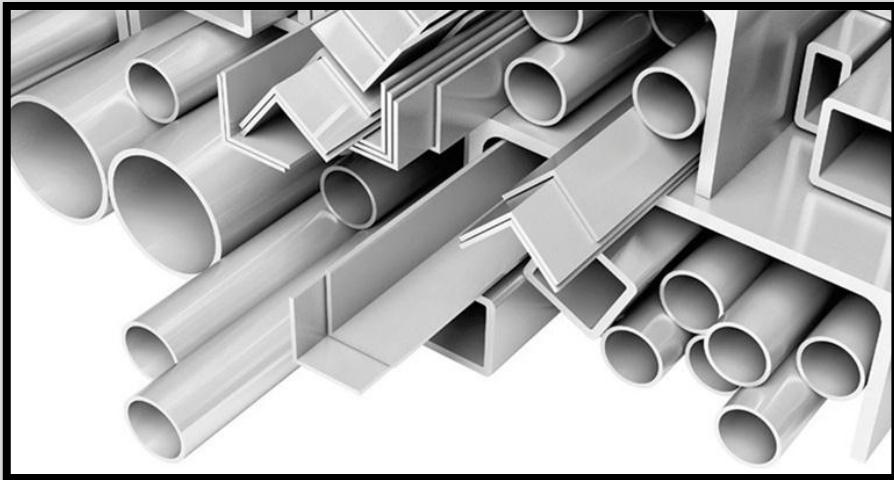


Aluminium Extrusion Plant.

Aluminium Extruded Profiles.

Extruded Sections



Introduction

Aluminium is a light, strong, flexible, non-corrosive and infinitely recyclable metal. Aluminium is widely used in the transport, construction, packaging and electrical industries.

Aluminum extrusion is a technique used to transform aluminum alloy into objects with a definitive cross-sectional profile for a wide range of uses. The extrusion process makes the most of aluminum's unique combination of physical characteristics. Its malleability allows it to be easily machined and cast, and yet aluminum is one third the density and stiffness of steel so the resulting products offer strength and stability, particularly when alloyed with other metals.

The aluminum extrusion process is greatly heat dependent. Monitoring temperatures from beginning to end is critical to ensuring aluminum alloy properties such as tensile and yield strengths are met, as well as affecting the final finish of the part.

The aluminum extrusion process begins by heating the billets or logs to 400-480°C (750-900°F). The aluminum alloy is still solid but malleable. It does not glow when heated; aluminum looks the same whether hot or cold.

Aluminium extrusion is used for a wide range of purposes, including components of the International Space Station. These diverse applications are possible due to the advantageous attributes of aluminum, from its particular blend of strength and ductility to its conductivity, its non-magnetic properties and its ability to be recycled repeatedly without loss of integrity.

Machinery Photographs



**600 MT ALUMINIUM EXTRUSION
PRESS**



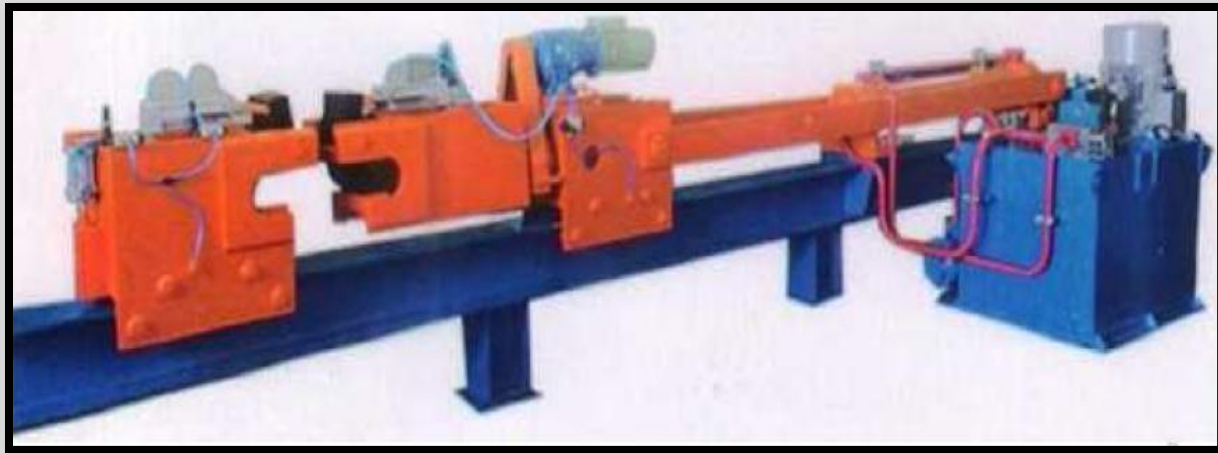
EXTRUSION PULLER





Hot saw

ROUGH CUTTING SAW



HYDRAULIC STRETCHER

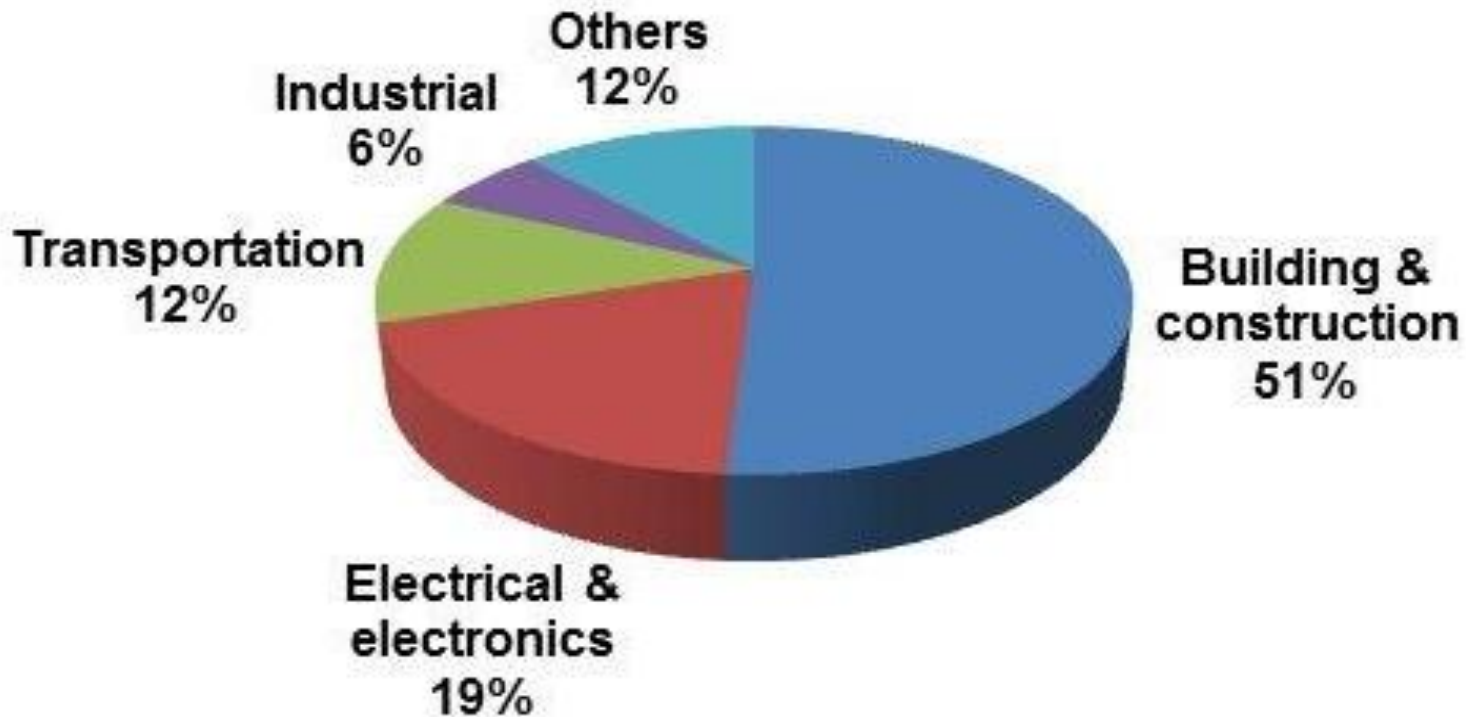


BELT CONVEYOR SYSTEM

Market Outlook

The aluminium extrusions sector in India has an installed capacity of around 550,000 tonnes per annum spread across an estimated 150 units that have presses ranging from 360 T to 9000 T capacity. The usage of aluminium extrusions in India, in 2013, was about 380,000 tonnes. While the building & construction segment accounts for 51% of the demand, industrial applications are growing rapidly.

India: Aluminium Extrusion Market by end use,
2013 (%)



Aluminum extrusions are used for their strength, flexibility, durability and sustainability in various sectors such as construction, transportation, electrical, machinery and consumer durables. They are 100% recyclable and emits no significant hazardous gasses during processing. The increased usage in green initiatives is driving the growth of the aluminum extrusion market. The global aluminum extrusion market to witness a tremendous growth at a rate of around 7% during the forecast period.

The growth of the automobile industry is anticipated to drive the growth of this market during the forecast period. Aluminum extrusion is replacing steel in automobiles and transport. It is preferred over other metals due to its light weight leading to reduced fuel consumption and reduced greenhouse gas emission. Moreover, aluminum is easily recyclable and resistant to corrosion, thus ensuring sustainability and durability of the vehicle.

Segmentation by End User and Analysis of the Global Aluminum Extrusion Market

- **Building and construction**
- **Transportation**
- **Machinery and equipment**
- **Consumer durables**
- **Electrical**

Building and construction segment is the largest market for aluminum extrusion. The growth of this segment is anticipated to be at a rate of 7% during the forecast period. Around 65% of the aluminum content in construction is estimated to be recycled annually. Its usage in building and construction is expected to increase during the forecast period, especially in doors, windows, panels, windows frames, ladders, and bridges.

The global aluminium extrusion market is set to witness a tremendous growth at a rate of around 7 per cent during 2015-2020. Of the three main product categories- Mill finished, Anodized, and Powder Coated, the Mill Finished segment alone is expected to reach around 13 million metric tons by the end of 2019.

Few Indian Major Players are as under

- **Aaryan Extrutech India Ltd.**
- **Alexcon Extrusions Ltd.**
- **Alicon Castalloy Ltd.**
- **Aluminium Profiles Ltd.**
- **Anurang Engineering Co. Pvt. Ltd.**

Project at a Glance

PROJECT AT A GLANCE				(` in lacs)			
COST OF PROJECT				MEANS OF FINANCE			
Particulars	Existing	Proposed	Total	Particulars	Existing	Proposed	Total
Land & Site Development Exp.	0.00	82.50	82.50	Capital	0.00	164.31	164.31
Buildings	0.00	142.00	142.00	Share Premium	0.00	0.00	0.00
Plant & Machineries	0.00	275.72	275.72	Other Type Share	0.00	0.00	0.00
Motor Vehicles	0.00	10.00	10.00	Capital	0.00	0.00	0.00
Office Automation Equipments	0.00	61.00	61.00	Reserves & Surplus	0.00	0.00	0.00
Technical Knowhow Fees & Exp.	0.00	15.00	15.00	Cash Subsidy	0.00	0.00	0.00
Franchise & Other Deposits	0.00	0.00	0.00	Internal Cash Accruals	0.00	0.00	0.00
Preliminary & Pre-operative Exp	0.00	2.00	2.00	Long/Medium Term Borrowings	0.00	492.92	492.92
Provision for Contingencies	0.00	27.00	27.00	Debentures / Bonds	0.00	0.00	0.00
Margin Money - Working Capital	0.00	42.00	42.00	Unsecured Loans/Deposits	0.00	0.00	0.00
TOTAL	0.00	657.22	657.22	TOTAL	0.00	657.22	657.22



Project at a Glance

Year	Annualised		Book Value	Debt	Dividend	Retained Earnings		Payout	Probable Market Price	P/E Ratio	Yield Price/Book Value
	EPS	CEPS	Per Share		Per Share	Per Share				No.of Times	
	`	`	`	`	`	%	`	%	`		%
1-2	5.16	9.31	15.16	24.00	0.00	100.00	5.16	0.00	5.16	1.00	0.00
2-3	8.10	11.70	23.26	18.00	0.00	100.00	8.10	0.00	8.10	1.00	0.00
3-4	11.00	14.12	34.25	12.00	0.00	100.00	11.00	0.00	11.00	1.00	0.00
4-5	13.81	16.53	48.06	6.00	0.00	100.00	13.81	0.00	13.81	1.00	0.00
5-6	16.51	18.88	64.57	0.00	0.00	100.00	16.51	0.00	16.51	1.00	0.00



Project at a Glance

Year	D. S. C. R.			Debt / Equity - Deposits Debt	Equity as-Equity	Total Net Worth	Return on Net Worth	Profitability Ratio					Assets Turnover Ratio	Current Ratio
	Individual	Cumulative	Overall					GPM	PBT	PAT	Net Contribution	P/V Ratio		
	(Number of times)			(Number of times)		%	%	%	%	%	%			
Initial				3.00	3.00									
1-2	1.35	1.35		1.58	1.58	2.37		12.48%	6.86%	4.99%	603.93	35.50%	2.06	0.99
2-3	1.66	1.50		0.77	0.77	1.37		14.58%	10.07%	6.70%	704.55	35.50%	2.22	1.28
3-4	2.03	1.66	2.03	0.35	0.35	0.81		15.99%	12.35%	7.97%	805.20	35.50%	2.25	1.63
4-5	2.47	1.84		0.12	0.12	0.49		16.95%	13.97%	8.89%	905.85	35.50%	2.18	2.03
5-6	3.00	2.03		0.00	0.00	0.30		17.59%	15.12%	9.57%	1006.50	35.50%	2.06	3.21



Project at a Glance

BEP

BEP - Maximum Utilisation Year	5
Cash BEP (% of Installed Capacity)	53.53%
Total BEP (% of Installed Capacity)	57.40%
IRR, PAYBACK and FACR	
Internal Rate of Return .. (In %age)	27.08%
Payback Period of the Project is (In Years)	2 Years 3 Months
Fixed Assets Coverage Ratio (No. of times)	7.787



Major Queries/Questions Answered in the Report?

- 1. What is Aluminium Extrusion Plant?**
- 2. How has the Aluminium Extrusion Plant performed so far and how will it perform in the coming years ?**
- 3. What is the Project Feasibility of Aluminium Extrusion Plant ?**
- 4. What are the requirements of Working Capital for setting up Aluminium Extrusion Plant?**

- 5. What is the structure of the Aluminium Extrusion Business and who are the key/major players ?**
- 6. What is the total project cost for setting up Aluminium Extrusion Plant ?**
- 7. What are the operating costs for setting up Aluminium Extrusion Plant?**
- 8. What are the machinery and equipment requirements for setting up Aluminium Extrusion Plant?**

9. Who are the Suppliers and Manufacturers of Plant & Machinery for setting up Aluminium Extrusion Plant?

10. What are the requirements of raw material for setting up Aluminium Extrusion Plant?

11. Who are the Suppliers and Manufacturers of Raw materials for setting up Aluminium Extrusion Plant?

12. What is the Plant Layout for setting up Aluminium Extrusion Business?

- 13. What is the total size of land required for setting up Aluminium Extrusion Plant?**
- 14. What will be the income and expenditures for Aluminium Extrusion Plant?**
- 15. What are the Projected Balance Sheets of Aluminium Extrusion Plant?**
- 16. What are the requirement of utilities and overheads for setting up Aluminium Extrusion Plant?**
- 17. What is the Built up Area Requirement and cost for setting up Aluminium Extrusion Business?**

18. What are the Personnel (Manpower) Requirements for setting up Aluminium Extrusion Business?

19. What is the Process Flow Sheet Diagram of Aluminium Extrusion Plant?

20. What is the time required to break-even of Aluminium Extrusion Plant?

21. What is the Break-Even Analysis of Aluminium Extrusion Plant?

22. What are the Project financials of Aluminium Extrusion Plant?



- 23. What are the Profitability Ratios of Aluminium Extrusion plant?**
- 24. What is the Sensitivity Analysis-Price/Volume of Aluminium Extrusion Plant?**
- 25. What are the Projected Pay-Back Period and IRR of Aluminium Extrusion Plant?**
- 27. What are the Market Opportunities for setting up Aluminium Extrusion Plant?**
- 28. What is the Market Study and Assessment for setting up Aluminium Extrusion Plant?**

Table of Contents of the Project Report



1. PROJECT LOCATION

- 1.1. DISTRICT PROFILE & GEOTECHNICAL SITE CHARACTERIZATION
 - 1.1.1. General
 - 1.1.2. Location & Geographical Area
 - 1.1.3. Topography
 - 1.1.4. Administrative set up
 - 1.1.5. Map
 - 1.1.6. Industry at a Glance

2. INTRODUCTION

- 2.1. EXTRUSIONS
- 3. TYPES OF EXTRUSION
 - 3.1. DIRECT EXTRUSION
 - 3.2. INDIRECT EXTRUSION

4. PROPERTIES

5. PHYSICAL PROPERTIES

- 5.1. ATOMIC STRUCTURE & NUCLEAR PROPERTIES
 - 5.1.1. Density:
 - 5.1.2. Compressibility:
- 5.2. MECHANICAL PROPERTIES

6. USES AND APPLICATIONS

7. B.I.S. SPECIFICATIONS

- 7.1. IS 1285 : 2002 WROUGHT ALUMINIUM AND ALUMINIUM ALLOYS - EXTRUDED ROUND TUBE AND HOLLOW SECTIONS FOR GENERAL ENGINEERING PURPOSES
- 7.2. IS 2673 : 2002 DIMENSIONS FOR WROUGHT ALUMINIUM AND ALUMINIUM ALLOYS EXTRUDED ROUND TUBE – SPECIFICATION
- 7.3. IS 6477 : 1983 DIMENSIONS FOR WROUGHT ALUMINIUM AND ALUMINIUM ALLOYS, EXTRUDED HOLLOW SECTION
- 7.4. IS 7092 : PART 2 : 1987 ALUMINIUM ALLOY TUBE FOR IRRIGATION PURPOSES - PART 2 : EXTRUDED TUBE

8. MARKET SURVEY

- 8.1. OUTLOOK OF THE ALUMINIUM EXTRUSION
- 8.2. ALUMINIUM

9. EXPORT & IMPORT: ALL COUNTRIES

- 9.1. EXPORT ALUMINIUM EXTRUSION
- 9.2. IMPORT ALUMINIUM EXTRUSION
- 9.3. FINANCIALS & COMPARISON OF MAJOR INDIAN PLAYERS/COMPANIES
- 9.4. ABOUT FINANCIAL STATEMENTS OF CMIE DATABASE
- 9.5. PROFITS & APPROPRIATIONS
- 9.6. TOTAL LIABILITIES
- 9.7. TOTAL ASSETS
- 9.8. NET CASH FLOW FROM OPERATING ACTIVITIES
- 9.9. SECTION – I
 - 9.9.1. Name of Company with Contact Details
 - 9.9.2. Name of Director(S)
 - 9.9.3. Plant Capacity
 - 9.9.4. Location of Plant
 - 9.9.5. Name of Raw Material (S) Consumed with Quantity & Cost

- 9.10. SECTION – II
- 9.10.1. Assets
- 9.10.2. Cash Flow
- 9.10.3. Cost as % ge of sales
- 9.10.4. Forex Transaction
- 9.10.5. Growth in Assets & Liabilities
- 9.10.6. Growth in Income & Expenditure
- 9.10.7. Income & Expenditure
- 9.10.8. Liabilities
- 9.10.9. Liquidity Ratios
- 9.10.10. Profitability Ratio
- 9.10.11. Profits
- 9.10.12. Return Ratios
- 9.10.13. Structure of Assets & Liabilities (%)
- 9.10.14. Working Capital & Turnover Ratios

10. EXPORT STATISTICS DATA OF INDIA

- 10.1. EXPORT STATISTICS DATA FOR ALUMINIUM EXTRUDED PRODUCT

11. PRESENT MANUFACTURERS



12. RAW MATERIAL DETAIL

- 12.1. TYPE OF RAW MATERIALS
- 12.2. PROPERTIES OF RAW MATERIAL

13. DIFFERENT TYPES OF EXTRUSION PROCESS

- 13.1. HOT EXTRUSION PROCESS
- 13.2. WARM AND COLD EXTRUSION PROCESSES

14. MANUFACTURING PROCESS

- 14.1. EXTRUSION PRESS

15. PROCESS FLOW DIAGRAM

16. EXTRUSION MATERIALS INSPECTION

17. EXTRUSION VISUAL INSPECTION

18. EXTRUSION PERFORMANCE INSPECTION



19. IMPACT OF INDUSTRIAL DEVELOPMENT ON THE ENVIRONMENT

19.1. EMISSIONS FROM THE EXTRUSION PROCESS

20. BUYER'S LIST

20.1. CONTACT DETAILS OF BUYER'S

20.2. NAME OF DIRECTOR(S)

20.3. PLANT CAPACITY

20.4. LOCATION OF PLANT

20.5. COMPANY WISE CONSUMPTION DETAIL OF THE RAW MATERIALS

21. SUPPLIERS OF PLANT & MACHINERY

22. SUPPLIERS OF RAW MATERIAL

23. MACHINERY, RAW MATERIAL & PRODUCT PHOTOGRAPHS

- 23.1. MACHINERY PHOTOGRAPHS
- 23.2. RAW MATWRIALS PHOTOGRAPHS
- 23.3. PRODUCT IMAGES

24. PLANT LAYOUT

25. QUOTATION OF PLANT, MACHINERY AND EQUIPMENTS FROM SUPPLIER

Project Financials

• Project at a Glance	Annexure
• Assumptions for Profitability workings	1
• Plant Economics.....	2
• Production Schedule.....	3
• Land & Building.....	4
Factory Land & Building	
Site Development Expenses	

- **Plant & Machinery.....5**
 - Indigenous Machineries**
 - Other Machineries (Miscellaneous, Laboratory etc.)**

- **Other Fixed Assets.....6**
 - Furniture & Fixtures**
 - Pre-operative and Preliminary Expenses**
 - Technical Knowhow**
 - Provision of Contingencies**

- **Working Capital Requirement Per Month.....7**
 - Raw Material**
 - Packing Material**
 - Lab & ETP Chemical Cost**
 - Consumable Store**

- **Overheads Required Per Month and Per Annum.....8**
Utilities & Overheads (Power, Water and Fuel Expenses etc.)
Royalty and Other Charges
Selling and Distribution Expenses

- **Salary and Wages9**

- **Turnover Per Annum10**

- **Share Capital.....11**
Equity Capital
Preference Share Capital

- **Annexure 1 :: Cost of Project and Means of Finance**
- **Annexure 2 :: Profitability and Net Cash Accruals**
 - **Revenue/Income/Realisation**
 - **Expenses/Cost of Products/Services/Items**
 - **Gross Profit**
 - **Financial Charges**
 - **Total Cost of Sales**
 - **Net Profit After Taxes**
 - **Net Cash Accruals**

• **Annexure 3 :: Assessment of Working Capital requirements**

- **Current Assets**
- **Gross Working Capital**
- **Current Liabilities**
- **Net Working Capital**
- **Working Note for Calculation of Work-in-process**

• **Annexure 4 :: Sources and Disposition of Funds**

- **Annexure 5 :: Projected Balance Sheets**

- **ROI (Average of Fixed Assets)**
- **RONW (Average of Share Capital)**
- **ROI (Average of Total Assets)**

- **Annexure 6 :: Profitability Ratios**

- **D.S.C.R**
- **Earnings Per Share (EPS)**
- **Debt Equity Ratio**

• **Annexure 7 :: Break-Even Analysis**

- **Variable Cost & Expenses**
- **Semi-Variable/Semi-Fixed Expenses**
- **Profit Volume Ratio (PVR)**
- **Fixed Expenses / Cost**
- **B.E.P**

- **Annexure 8 to 11 :: Sensitivity Analysis-Price/Volume**

- **Resultant N.P.B.T**
- **Resultant D.S.C.R**
- **Resultant PV Ratio**
- **Resultant DER**
- **Resultant ROI**
- **Resultant BEP**

- **Annexure 12 :: Shareholding Pattern and Stake Status**

- **Equity Capital**

- **Preference Share Capital**

- **Annexure 13 :: Quantitative Details-Output/Sales/Stocks**

- **Determined Capacity P.A of Products/Services**

- **Achievable Efficiency/Yield % of Products/Services/Items**

- **Net Usable Load/Capacity of Products/Services/Items**

- **Expected Sales/ Revenue/ Income of Products/ Services/ Items**

- **Annexure 14** :: **Product wise Domestic Sales Realisation**
- **Annexure 15** :: **Total Raw Material Cost**
- **Annexure 16** :: **Raw Material Cost per unit**
- **Annexure 17** :: **Total Lab & ETP Chemical Cost**
- **Annexure 18** :: **Consumables, Store etc.**
- **Annexure 19** :: **Packing Material Cost**
- **Annexure 20** :: **Packing Material Cost Per Unit**

- **Annexure 21** :: **Employees Expenses**
- **Annexure 22** :: **Fuel Expenses**
- **Annexure 23** :: **Power/Electricity Expenses**
- **Annexure 24** :: **Royalty & Other Charges**
- **Annexure 25** :: **Repairs & Maintenance**

Expenses

- **Annexure 26** :: **Other Manufacturing Expenses**
- **Annexure 27** :: **Administration Expenses**
- **Annexure 28** :: **Selling Expenses**

- **Annexure 29 :: Depreciation Charges – as per Books (Total)**
- **Annexure 30 :: Depreciation Charges – as per Books (P & M)**
- **Annexure 31 :: Depreciation Charges - as per IT Act WDV (Total)**
- **Annexure 32 :: Depreciation Charges - as per IT Act WDV (P & M)**
- **Annexure 33 :: Interest and Repayment - Term Loans**
- **Annexure 34 :: Tax on Profits**
- **Annexure 35 :: Projected Pay-Back Period and IRR**

Reasons for Buying our Report:

- **This report helps you to identify a profitable project for investing or diversifying into by throwing light to crucial areas like industry size, market potential of the product and reasons for investing in the product**
- **This report provides vital information on the product like it's characteristics and segmentation**
- **This report helps you market and place the product correctly by identifying the target customer group of the product**

- **This report helps you understand the viability of the project by disclosing details like machinery required, project costs and snapshot of other project financials**
- **The report provides a glimpse of government regulations applicable on the industry**
- **The report provides forecasts of key parameters which helps to anticipate the industry performance and make sound business decisions**

Our Approach:

- **Our research reports broadly cover Indian markets, present analysis, outlook and forecast for a period of five years.**
- **The market forecasts are developed on the basis of secondary research and are cross-validated through interactions with the industry players**
- **We use reliable sources of information and databases. And information from such sources is processed by us and included in the report**

Scope of the Report

The report titled “Market Survey cum Detailed Techno Economic Feasibility Report on Aluminium Extrusion Plant” provides an insight into the Aluminium Extrusion market in India with focus on uses and applications, Manufacturing Process, Process Flow Sheets, Plant Layout and Project Financials of Aluminium Extrusion project. The report assesses the market sizing and growth of the Indian Aluminium Extrusion Industry. While expanding a current business or while venturing into new business, entrepreneurs are often faced with the dilemma of zeroing in on a suitable product/line. And before diversifying/venturing into any product, they wish to study the following aspects of the identified product:

- **Good Present/Future Demand**
- **Export-Import Market Potential**
- **Raw Material & Manpower Availability**
- **Project Costs and Payback Period**

We at NPCS, through our reliable expertise in the project consultancy and market research field, have demystified the situation by putting forward the emerging business opportunity in the Aluminium Extrusion sector in India along with its business prospects. Through this report we have identified Aluminium Extrusion project as a lucrative investment avenue.

Tags

Aluminum Extrusions, Aluminium Extrusion Plant, Project Report on Aluminium Extrusion Plant, Start Aluminum Extrusion Plant, Aluminium Extrusion Company, Aluminium Extrusion Plants in India, Extrusion Process, How to Start Aluminum Extrusion Company, Aluminium Extrusion Plant Cost, Aluminum Industry in India, Aluminum Extrusions Process, Aluminium Extrusion Machine in India, Aluminium Extrusion Business in India, India's Aluminium Extrusion Business, Extrusion Plant in India, Aluminium Extrusion Production Line, Aluminium Industry in India, Aluminum Extrusion Technology, Extrusion of Aluminium, Aluminium Extrusion project ideas, Projects on Small Scale Industries, Small scale industries projects ideas, Aluminium Extrusion Based Small Scale Industries Projects, Project profile on small scale industries, How to Start Aluminium Extrusion Industry in India, Aluminium Extrusion Projects, New project profile on Aluminium Extrusion industries, Project Report on Aluminium Extrusion Industry, Detailed Project Report on Aluminium Extrusion,

Project Report on Aluminium Extrusion, Pre-Investment Feasibility Study on Aluminium Extrusion, Techno-Economic feasibility study on Aluminium Extrusion, Feasibility report on Aluminium Extrusion, Free Project Profile on Aluminium Extrusion Plant, Project profile on Aluminium Extrusion, Download free project profile on Aluminium Extrusion Plant, Industrial Project Report, Project consultant, Project consultancy, NPCS, Niir, Process technology books, Business consultancy, Business consultant, Project identification and selection, Preparation of Project Profiles, Startup, Business guidance, Business guidance to clients, Startup Project for Aluminium Extrusion Plant

Niir Project Consultancy Services (NPCS)
can provide Detailed Project Report on
Aluminium Extrusion Plant.
Aluminium Extruded Profiles.
Extruded Sections

See more

<https://goo.gl/o9tk1b>

<https://goo.gl/ZFpVga>

<https://goo.gl/BoMJPG>



Visit us at

www.entrepreneurindia.co



www.entrepreneurindia.co

**Take a look at
Niir Project Consultancy Services
on #Street View**

<https://goo.gl/VstWkd>

*Locate us on
Google Maps*

<https://goo.gl/maps/BKkUtq9gevT2>

OUR CLIENTS

Our inexhaustible Client list includes public-sector companies, Corporate Houses, Government undertaking, individual entrepreneurs, NRI, Foreign investors, non-profit organizations and educational institutions from all parts of the World. The list is just a glimpse of our esteemed & satisfied Clients.

Click here to take a look

<https://goo.gl/G3ICjV>



Free Instant Online Project

Identification and Selection Service

Our Team has simplified the process for you by providing a "Free Instant Online Project Identification & Selection" search facility to identify projects based on multiple search parameters related to project costs namely: Plant & Machinery Cost, Total Capital Investment, Cost of the project, Rate of Return% (ROR) and Break Even Point % (BEP). You can sort the projects on the basis of mentioned pointers and identify a suitable project matching your investment requisites.....[Read more](#)



Download Complete List of Project

Reports:

▪ Detailed Project Reports

NPCS is manned by engineers, planners, specialists, financial experts, economic analysts and design specialists with extensive experience in the related industries.

Our Market Survey cum Detailed Techno Economic Feasibility Report provides an insight of market in India. The report assesses the market sizing and growth of the Industry. While expanding a current business or while venturing into new business, entrepreneurs are often faced with the dilemma of zeroing in on a suitable product/line.



And before diversifying/venturing into any product, they wish to study the following aspects of the identified product:

- **Good Present/Future Demand**
- **Export-Import Market Potential**
- **Raw Material & Manpower Availability**
- **Project Costs and Payback Period**

The detailed project report covers all aspect of business, from analyzing the market, confirming availability of various necessities such as Manufacturing Plant, Detailed Project Report, Profile, Business Plan, Industry Trends, Market Research, Survey, Manufacturing Process, Machinery, Raw Materials, Feasibility Study, Investment Opportunities, Cost and Revenue, Plant Economics, Production Schedule,



Working Capital Requirement, uses and applications, Plant Layout, Project Financials, Process Flow Sheet, Cost of Project, Projected Balance Sheets, Profitability Ratios, Break Even Analysis. The DPR (Detailed Project Report) is formulated by highly accomplished and experienced consultants and the market research and analysis are supported by a panel of experts and digitalized data bank.

We at NPCS, through our reliable expertise in the project consultancy and market research field, have demystified the situation by putting forward the emerging business opportunity in India along with its business prospects.....[Read more](#)



Contact us

NIIR PROJECT CONSULTANCY SERVICES

106-E, Kamla Nagar, Opp. Spark Mall,

New Delhi-110007, India.

Email: npcs.ei@gmail.com , info@entrepreneurindia.co

Tel: +91-11-23843955, 23845654, 23845886, 8800733955

Mobile: +91-9811043595

Fax: +91-11-23845886

Website : www.entrepreneurindia.co , www.niir.org

Take a look at NIIR PROJECT CONSULTANCY SERVICES on #StreetView

<https://goo.gl/VstWkd>



Niir PROJECT CONSULTANCY SERVICES

An ISO 9001:2015 Company



Who are we?

- *One of the leading reliable names in industrial world for providing the most comprehensive technical consulting services*
- *We adopt a systematic approach to provide the strong fundamental support needed for the effective delivery of services to our Clients' in India & abroad*



We at NPCS want to grow with you by providing solutions scale to suit your new operations and help you reduce risk and give a high return on application investments. We have successfully achieved top-notch quality standards with a high level of customer appreciation resulting in long lasting relation and large amount of referral work through technological breakthrough and innovative concepts. A large number of our Indian, Overseas and NRI Clients have appreciated our expertise for excellence which speaks volumes about our commitment and dedication to every client's success.



We bring deep, functional expertise, but are known for our holistic perspective: we capture value across boundaries and between the silos of any organization. We have proven a multiplier effect from optimizing the sum of the parts, not just the individual pieces. We actively encourage a culture of innovation, which facilitates the development of new technologies and ensures a high quality product.



What do we offer?

- *Project Identification*
- *Detailed Project Reports/Pre-feasibility Reports*
- *Market Research Reports*
- *Business Plan*
- *Technology Books and Directory*
- *Industry Trend*
- *Databases on CD-ROM*
- *Laboratory Testing Services*
- *Turnkey Project Consultancy/Solutions*
- *Entrepreneur India (An Industrial Monthly Journal)*

How are we different ?

- *We have two decades long experience in project consultancy and market research field*
- *We empower our customers with the prerequisite know-how to take sound business decisions*
- *We help catalyze business growth by providing distinctive and profound market analysis*
- *We serve a wide array of customers , from individual entrepreneurs to Corporations and Foreign Investors*
- *We use authentic & reliable sources to ensure business precision*



Our Approach

Requirement collection

Thorough analysis of the project

Economic feasibility study of the Project

Market potential survey/research

Report Compilation



Contact us

NIIR PROJECT CONSULTANCY SERVICES

106-E, Kamla Nagar, Opp. Spark Mall,
New Delhi-110007, India.

Email: npcs.ei@gmail.com , info@entrepreneurindia.co

Tel: +91-11-23843955, 23845654, 23845886, 8800733955

Mobile: +91-9811043595

Fax: +91-11-23845886

Website : www.entrepreneurindia.co , www.niir.org

Take a look at NIIR PROJECT CONSULTANCY SERVICES on #StreetView

<https://goo.gl/VstWkd>



Follow us



➤ <https://www.linkedin.com/company/niir-project-consultancy-services>



➤ <https://www.facebook.com/NIIR.ORG>



➤ <https://www.youtube.com/user/NIIRproject>



➤ <https://plus.google.com/+EntrepreneurIndiaNewDelhi>



➤ https://twitter.com/npcs_in



➤ <https://www.pinterest.com/npcsindia/>





For more information, visit us at:

www.niir.org

www.entrepreneurindia.co



www.entrepreneurindia.co