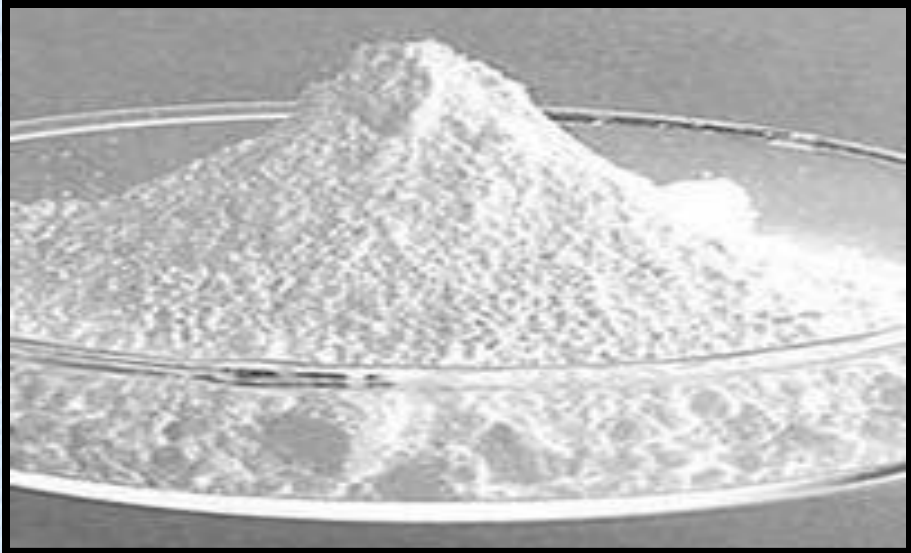


**Zinc Sulphate (Agriculture  
Grade) Manufacturing Business.**

**Agro Chemicals.**

**Zinc Sulphate (White Vitriol)  
Fertilizer.**



# **Introduction**

**Zinc sulphate heptahydrate (Zn-21%) is recommended for soil application at the rate prescribed by the State Agricultural Universities/Soil Testing Laboratories.**

**The dose varies across the states from 25 to 60 kg/ha depending on soil type, cropping intensity and crop productivity levels, to be applied once in two years.**

**Zinc is a naturally occurring mineral. Zinc is important for growth and for the development and health of body tissues. Zinc sulfate is used to treat and to prevent zinc deficiency. Zinc sulfate may also be used for purposes not listed in this medication guide.**

**Zinc sulfate is the inorganic compound with the formula  $ZnSO_4$  as well as any of three hydrates. It was historically known as "white vitriol". All of the various forms are colorless solids. The heptahydrate is commonly encountered. It is on the World Health Organization's List of Essential Medicines, a list of the most important medication needed in a basic health system.**

**Zinc sulfate is a zinc salt that has many uses as a medication or nutritional supplement. Zinc sulfate is often prescribed for individuals deficient in the mineral zinc. Zinc sulfate is also used to treat acne, due to its anti-inflammatory and wound-healing properties.**

**Zinc sulfate is a powder that is colorless and completely water-soluble. The product can be used in different applications, including some connected with maintaining good health. A number of over the counter products contain some level of zinc sulfate, as well as many prescription medications.**

**One application of zinc sulfate that may surprise some people is the use of the powder as a means to preserve wood products. The properties of the sulfate help it permeate the body of the wood and help to protect it from wear and tear from regular use as well as adverse weather conditions.**

**The sulfate can be used safely with just about any type of wood product and eliminates the necessity of using other preservatives that have in recent years been proven to have adverse effects on the health of human beings.**

## **Chemical Formula:**

**Zinc Sulfate 33 % :  $\text{ZnSO}_4 \cdot \text{H}_2\text{O}$ ,**

**Zinc Sulfate 21 % :  $\text{ZnSO}_4 \cdot 7\text{H}_2\text{O}$**

**Zinc Sulfate 12 % :  $\text{ZnSO}_4$  in solution.**

# Machinery Photographs



**STORAGE TANKS**



**REACTORS**

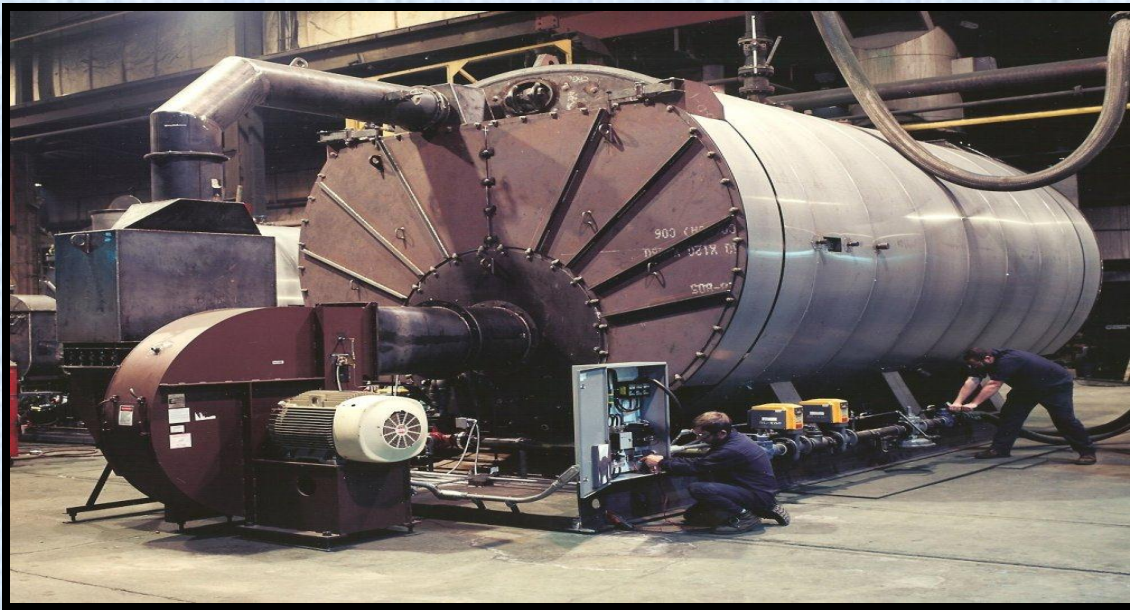


**EVAPORATOR**



**CENTRIFUGE**





**BOILER**



**CRYSTALLIZER**

## **Market Outlook**

**Zinc Sulphate is used in agriculture as a weed killer and to give protection against pests. It is used to supply zinc in animal feeds and fertilizers; Zinc Sulphate is also an important constituent of the precipitating bath in the manufacture of viscose rayon and in electrolyte for zinc plating. Zinc Sulphate functions as a mordant in dyeing; as a preservative for skins and leather; and as an astringent and emetic in medicine.**

**Zinc sulphate is an inorganic compound which is colorless, water soluble powder and crystalline and having a chemical formula of  $ZnSO_4$ . Zinc Sulphate comes from zinc which is a naturally occurring mineral from the earth surface, food and water and it is mostly recognized for the growth and development of human health issues. Zinc Sulphate is typically used in healthcare industries in the treatment of zinc deficiencies. It is also considered as an important mineral for plant nutrition, human and animal. Zinc sulphate can also be used as a fertilizer in the agriculture, pharmaceutical and for commercial purpose.**

**The demand for zinc sulphate is expected to rise in the coming years in agricultural and healthcare sector. Zinc sulphate is considered as an important element for human health, plant nutrition and for animals. The deficiency of zinc in the infant segment has created a threat to human health in many countries, through which the demand for zinc sulphate has risen over the globe particularly in agriculture as a fertilizer. Zinc sulphate can be used in various application related to health issues but if the intake of zinc sulphate is more than actual than it can be dangerous to health.**

**Along with this, the decreasing rate of arable land has increased the demand for zinc sulphate to meet the current demand for global crop yields and food consumption. Due to this the demand for zinc sulphate has increased in the agricultural applications. These trends are contributing the global zinc sulphate market to have strong demand in the coming years.**

**Zinc sulphate is a very versatile compound and has wide range of applications in various industries such as healthcare, pharmaceutical, agriculture, chemicals and others. Zinc sulphate is mostly used as a medicine in healthcare industries in order to prevent the zinc deficiency in a human body and diseases related to skin.**

**In pharmaceutical industries, zinc sulphate is used to prepare medicines. Considering agricultural sector, it can also be used a major fertilizer for plant nutrition.**

**The demand for zinc sulphate in the Middle East & Africa has seen an intensive growth due to the huge population of African region is suffering from zinc deficiency and other health related issues. Along with this the government has taken very positive initiatives to come up with the solutions to get over with diseases. Due to this factor the agriculture and healthcare sector can have a fruitful scope to capture the market.**

**Asia-Pacific is considered to the fastest growing market. China is one of the major suppliers of zinc sulphate. Moreover as in Agriculture, India can be a strong market for zinc sulphate as huge population is engaged in the activities related to farming and agriculture. Increasing use as a fertilizer has made the biggest demand growth and in the production for human food and animal feed.**

**Average Crop Yield advantage due to application of  
Zinc Sulphate recommended level with full dose of  
NPK**

<b>State</b>	<b>Crop</b>	<b>No. of trials</b>	<b>Yield increase (kg/ha)</b>
<b>Bihar</b>	Rice as paddy	958	510
	Wheat	394	339
<b>Haryana</b>	Rice as paddy	75	580
	Wheat	456	350
<b>Punjab</b>	Rice as paddy	250	950
	Wheat	686	360
<b>Madhya Pradesh</b>	Rice as paddy	-	500
	Wheat	-	450



# Project at a Glance

PROJECT AT A GLANCE				(Rs. in lacs)			
COST OF PROJECT				MEANS OF FINANCE			
Particulars	Existing	Proposed	Total	Particulars	Existing	Proposed	Total
Land & Site Development Exp.	0.00	90.00	90.00	Capital	0.00	109.73	109.73
Buildings	0.00	70.80	70.80	Share Premium	0.00	0.00	0.00
Plant & Machineries	0.00	169.50	169.50	Other Type Share Capital	0.00	0.00	0.00
Motor Vehicles	0.00	6.00	6.00	Reserves & Surplus	0.00	0.00	0.00
Office Automation Equipments	0.00	38.00	38.00	Cash Subsidy	0.00	0.00	0.00
Technical Knowhow Fees & Exp.	0.00	20.00	20.00	Internal Cash Accruals	0.00	0.00	0.00
Franchise & Other Deposits	0.00	0.00	0.00	Long/Medium Term Borrowings	0.00	329.19	329.19
Preliminary & Pre-operative Exp	0.00	2.00	2.00	Debentures / Bonds	0.00	0.00	0.00
Provision for Contingencies	0.00	16.00	16.00	Unsecured Loans/Deposits	0.00	0.00	0.00
Margin Money - Working Capital	0.00	26.62	26.62				
<b>TOTAL</b>	<b>0.00</b>	<b>438.92</b>	<b>438.92</b>	<b>TOTAL</b>	<b>0.00</b>	<b>438.92</b>	<b>438.92</b>



# Project at a Glance

Year	Annualised		Book Value	Debt	Dividend	Retained Earnings		Payout	Probable Market Price	P/E Ratio	Yield Price/Book Value
	EPS Rs	CEPS Rs	Per Share Rs		Per Share Rs	Per Share %	Per Share Rs	%	Rs	No.of Times	%
1-2	5.47	9.23	15.47	24.00	0.00	100.00	5.47	0.00	5.47	1.00	0.00
2-3	8.23	11.50	23.71	18.00	0.00	100.00	8.23	0.00	8.23	1.00	0.00
3-4	10.97	13.82	34.68	12.00	0.00	100.00	10.97	0.00	10.97	1.00	0.00
4-5	13.64	16.13	48.32	6.00	0.00	100.00	13.64	0.00	13.64	1.00	0.00
5-6	16.23	18.40	64.55	0.00	0.00	100.00	16.23	0.00	16.23	1.00	0.00



# Project at a Glance

Year	D. S. C. R.			Debt / Equity - Deposits Debt	Equity as-Equity	Total Net Worth	Return on Net Worth	Profitability Ratio					Assets Turnover Ratio	Current Ratio
	Individual	Cumulative	Overall					GPM	PBT	PAT	Net Contribution	P/V Ratio		
	(Number of times)			(Number of times)		%	%	%	%	%		%		
Initial				3.00	3.00									
1-2	1.35	1.35		1.55	1.55	2.44		12.48%	6.87%	4.89%	367.18	29.90%	2.17	0.98
2-3	1.64	1.49		0.76	0.76	1.43		14.08%	9.52%	6.30%	422.29	29.47%	2.33	1.24
3-4	1.99	1.64	1.99	0.35	0.35	0.87		15.16%	11.41%	7.35%	482.47	29.46%	2.35	1.54
4-5	2.41	1.81		0.12	0.12	0.54		15.89%	12.77%	8.13%	542.65	29.46%	2.28	1.88
5-6	2.92	1.99		0.00	0.00	0.35		16.39%	13.75%	8.70%	602.83	29.45%	2.17	2.85

# Project at a Glance

## BEP

BEP - Maximum Utilisation Year	5
Cash BEP (% of Installed Capacity)	49.18%
Total BEP (% of Installed Capacity)	53.14%
IRR, PAYBACK and FACR	
Internal Rate of Return .. ( In %age )	26.31%
Payback Period of the Project is ( In Years )	2 Years 3 Months
Fixed Assets Coverage Ratio ( No. of times )	8.066



# Major Queries/Questions Answered in the Report?

- 1. What is Zinc Sulphate (Agriculture Grade) Manufacturing industry ?**
- 2. How has the Zinc Sulphate (Agriculture Grade) Manufacturing industry performed so far and how will it perform in the coming years ?**
- 3. What is the Project Feasibility of Zinc Sulphate (Agriculture Grade) Manufacturing Plant ?**
- 4. What are the requirements of Working Capital for setting up Zinc Sulphate (Agriculture Grade) Manufacturing plant ?**

- 5. What is the structure of the Zinc Sulphate (Agriculture Grade) Manufacturing Business and who are the key/major players ?**
- 6. What is the total project cost for setting up Zinc Sulphate (Agriculture Grade) Manufacturing plant ?**
- 7. What are the operating costs for setting up Zinc Sulphate (Agriculture Grade) Manufacturing project ?**
- 8. What are the machinery and equipment requirements for setting up Zinc Sulphate (Agriculture Grade) Manufacturing plant ?**

**9. Who are the Suppliers and Manufacturers of Plant & Machinery for setting up Zinc Sulphate (Agriculture Grade) Manufacturing plant ?**

**10. What are the requirements of raw material for setting up Zinc Sulphate (Agriculture Grade) Manufacturing Business?**

**11. Who are the Suppliers and Manufacturers of Raw materials for setting up Zinc Sulphate (Agriculture Grade) Manufacturing plant ?**

**12. What is the Manufacturing Process of Zinc Sulphate (Agriculture Grade)?**

- 13. What is the total size of land required for setting up Zinc Sulphate (Agriculture Grade) Manufacturing plant ?**
- 14. What will be the income and expenditures for Zinc Sulphate (Agriculture Grade) Manufacturing plant ?**
- 15. What are the Projected Balance Sheets of Zinc Sulphate (Agriculture Grade) Manufacturing Project ?**
- 16. What are the requirement of utilities and overheads for setting up Zinc Sulphate (Agriculture Grade) Manufacturing plant?**
- 17. What is the Built up Area Requirement and cost for setting up Zinc Sulphate (Agriculture Grade) Manufacturing Business?**



**18. What are the Personnel (Manpower) Requirements for setting up Zinc Sulphate (Agriculture Grade) Manufacturing Business?**

**19. What are Statistics of Import & Export for Zinc Sulphate (Agriculture Grade) ?**

**20. What is the time required to break-even of Zinc Sulphate (Agriculture Grade) Manufacturing plant?**

**21. What is the Break-Even Analysis of Zinc Sulphate (Agriculture Grade) Manufacturing plant?**

**22. What are the Project financials of Zinc Sulphate (Agriculture Grade) Manufacturing Business?**



- 23. What are the Profitability Ratios of Zinc Sulphate (Agriculture Grade) Manufacturing plant?**
- 24. What is the Sensitivity Analysis-Price/Volume of Zinc Sulphate (Agriculture Grade) Manufacturing project?**
- 25. What are the Projected Pay-Back Period and IRR of Zinc Sulphate (Agriculture Grade) Manufacturing plant?**
- 26. What is the Process Flow Sheet Diagram of Zinc Sulphate (Agriculture Grade) Manufacturing project?**

**27. What are the Market Opportunities for setting up Zinc Sulphate (Agriculture Grade) Manufacturing plant?**

**28. What is the Market Study and Assessment for setting up Zinc Sulphate (Agriculture Grade) Manufacturing plant?**

**29. What is the Plant Layout for setting up Zinc Sulphate (Agriculture Grade) Manufacturing Business?**

# **Table of Contents of the Project Report**

# 1. PROFILE & GEOTECHNICAL SITE CHARACTERIZATION

- 1.1. GENERAL:
- 1.2. GEOGRAPHY:
- 1.3. MAP:
- 1.4. DEMOGRAPHICS:
- 1.5. TRANSPORT AND COMMUNICATION:

# 2. INTRODUCTION

# 3. ZINC SULFATE

- 3.1. CHEMICAL FORMULA:
- 3.2. SYNONYMS:

# 4. APPLICATION

# 5. GENERAL SPECIFICATIONS

- 5.1. ZINC SULPHATE SOLUTION 12%
- 5.2. ZINC SULPHATE HEPTAHYDRATE 21%



5.3. ZINC SULPHATE MONOHYDRATE 33%

## 6. B.I.S. SPECIFICATION

6.1. IS: 8249 -1976 - ZINC SULPHATE (AGRICULTURE GRADE)

## 7. MARKET SURVEY

## 8. FINANCIALS & COMPARISON OF MAJOR INDIAN PLAYERS/COMPANIES

8.1. ABOUT FINANCIAL STATEMENTS OF CMIE DATABASE

8.2. PROFITS & APPROPRIATIONS

8.3. TOTAL LIABILITIES

8.4. TOTAL ASSETS

8.5. NET CASH FLOW FROM OPERATING ACTIVITIES

8.6. SECTION – I

8.6.1. Name of Company with Contact Details

8.6.2. Name of Director(s)

8.6.3. Plant Capacity

8.6.4. Location of Plant

8.6.5. Name of Raw Material(s) Consumed with Quantity & Cost

- 8.7. SECTION – II
- 8.7.1. Income & Expenditure
- 8.7.2. Profits
- 8.7.3. Forex Transaction
- 8.7.4. Liabilities
- 8.7.5. Assets
- 8.7.6. Growth in Income & Expenditure
- 8.7.7. Growth in Assets & Liabilities
- 8.7.8. Profitability Ratio
- 8.7.9. Cash Flow
- 8.7.10. Cost as % ge of sales
- 8.7.11. Return Ratios
- 8.7.12. Structure of Assets & Liabilities (%)
- 8.7.13. Working Capital & Turnover Ratios

## **9. EXPORT & IMPORTS STATISTICS DATA OF INDIA**

- 9.1. EXPORT STATISTICS DATA ON ZINC SULPHATE
- 9.2. IMPORT STATISTICS DATA ON ZINC SULPHATE

## **10. PRESENT MANUFACTURERS**

## **11. RAW MATERIAL DETAILS**

## **12. DIFFERENT TYPE OF ZINC ASH**

12.1. ZINC FOR CROP PRODUCTION

## **13. MANUFACTURING PROCESS**

13.1. TECHNOLOGICAL PROCESS CONSISTS FROM:

13.2. PRODUCTION MACHINERY INVOLVE ARE :

13.3. MATERIAL PREPARATION

13.4. PACKING

## **14. PROCESS FLOW DIAGRAM**

## **15. ZINC DEFICIENCY EFFECTIVE CONDITION**

15.1. SOIL CONDITIONS AND THE NEED FOR ZINC FERTILIZERS

15.2. PREDICTING THE NEED FOR ZINC

## **16. SOURCES OF ZINC**





**17. PLANT & MACHINERY DESCRIPTION**

**18. SUPPLIERS OF RAW MATERIALS**

**19. SUPPLIERS OF PLANT & MACHINERY**

**20. PLANT LAYOUT**

**21. PRODUCT, MACHINERY & RAW MATERIAL PHOTOGRAPHS**

21.1. PRODUCT PHOTOGRAPHS

21.2. MACHINERY PHOTOGRAPHS

21.3. RAW MATERIAL PHOTOGRAPHS



# Project Financials

<b>Project at a Glance</b>	<b>Annexure</b>
• Assumptions for Profitability workings .....	1
• Plant Economics.....	2
• Production Schedule.....	3
• Land & Building.....	4
Factory Land & Building	
Site Development Expenses	

- **Plant & Machinery.....5**
  - Indigenous Machineries**
  - Other Machineries (Miscellaneous, Laboratory etc.)**
  
- **Other Fixed Assets.....6**
  - Furniture & Fixtures**
  - Pre-operative and Preliminary Expenses**
  - Technical Knowhow**
  - Provision of Contingencies**
  
- **Working Capital Requirement Per Month.....7**
  - Raw Material**
  - Packing Material**
  - Lab & ETP Chemical Cost**
  - Consumable Store**

- **Overheads Required Per Month and Per Annum.....8**  
**Utilities & Overheads (Power, Water and Fuel Expenses etc.)**  
**Royalty and Other Charges**  
**Selling and Distribution Expenses**
  
- **Salary and Wages .....9**
  
- **Turnover Per Annum .....10**
  
- **Share Capital.....11**  
**Equity Capital**  
**Preference Share Capital**

- **Annexure 1 :: Cost of Project and Means of Finance**
- **Annexure 2 :: Profitability and Net Cash Accruals**
  - **Revenue/Income/Realisation**
  - **Expenses/Cost of Products/Services/Items**
  - **Gross Profit**
  - **Financial Charges**
  - **Total Cost of Sales**
  - **Net Profit After Taxes**
  - **Net Cash Accruals**

- **Annexure 3 :: Assessment of Working Capital requirements**

- **Current Assets**
- **Gross Working Capital**
- **Current Liabilities**
- **Net Working Capital**
- **Working Note for Calculation of Work-in-process**

- **Annexure 4 :: Sources and Disposition of Funds**

- **Annexure 5 :: Projected Balance Sheets**

- **ROI (Average of Fixed Assets)**
- **RONW (Average of Share Capital)**
- **ROI (Average of Total Assets)**

- **Annexure 6 :: Profitability Ratios**

- **D.S.C.R**
- **Earnings Per Share (EPS)**
- **Debt Equity Ratio**

- **Annexure 7 :: Break-Even Analysis**

- **Variable Cost & Expenses**
- **Semi-Variable/Semi-Fixed Expenses**
- **Profit Volume Ratio (PVR)**
- **Fixed Expenses / Cost**
- **B.E.P**



- **Annexure 8 to 11 :: Sensitivity Analysis-Price/Volume**

- **Resultant N.P.B.T**
- **Resultant D.S.C.R**
- **Resultant PV Ratio**
- **Resultant DER**
- **Resultant ROI**
- **Resultant BEP**

- **Annexure 12 :: Shareholding Pattern and Stake Status**

- **Equity Capital**

- **Preference Share Capital**

- **Annexure 13 :: Quantitative Details-Output/Sales/Stocks**

- **Determined Capacity P.A of Products/Services**

- **Achievable Efficiency/Yield % of Products/Services/Items**

- **Net Usable Load/Capacity of Products/Services/Items**

- **Expected Sales/ Revenue/ Income of Products/ Services/ Items**

- **Annexure 14** :: **Product wise Domestic Sales Realisation**
- **Annexure 15** :: **Total Raw Material Cost**
- **Annexure 16** :: **Raw Material Cost per unit**
- **Annexure 17** :: **Total Lab & ETP Chemical Cost**
- **Annexure 18** :: **Consumables, Store etc.**
- **Annexure 19** :: **Packing Material Cost**
- **Annexure 20** :: **Packing Material Cost Per Unit**

- **Annexure 21** :: **Employees Expenses**
- **Annexure 22** :: **Fuel Expenses**
- **Annexure 23** :: **Power/Electricity Expenses**
- **Annexure 24** :: **Royalty & Other Charges**
- **Annexure 25** :: **Repairs & Maintenance Expenses**
- **Annexure 26** :: **Other Manufacturing Expenses**
- **Annexure 27** :: **Administration Expenses**
- **Annexure 28** :: **Selling Expenses**

- **Annexure 29 :: Depreciation Charges – as per Books (Total)**
- **Annexure 30 :: Depreciation Charges – as per Books (P & M)**
- **Annexure 31 :: Depreciation Charges - as per IT Act WDV (Total)**
- **Annexure 32 :: Depreciation Charges - as per IT Act WDV (P & M)**
- **Annexure 33 :: Interest and Repayment - Term Loans**
- **Annexure 34 :: Tax on Profits**
- **Annexure 35 :: Projected Pay-Back Period and IRR**

# Reasons for Buying our Report:

- **This report helps you to identify a profitable project for investing or diversifying into by throwing light to crucial areas like industry size, market potential of the product and reasons for investing in the product**
- **This report provides vital information on the product like it's characteristics and segmentation**
- **This report helps you market and place the product correctly by identifying the target customer group of the product**

- **This report helps you understand the viability of the project by disclosing details like machinery required, project costs and snapshot of other project financials**
- **The report provides a glimpse of government regulations applicable on the industry**
- **The report provides forecasts of key parameters which helps to anticipate the industry performance and make sound business decisions**

# Our Approach:

- **Our research reports broadly cover Indian markets, present analysis, outlook and forecast for a period of five years.**
- **The market forecasts are developed on the basis of secondary research and are cross-validated through interactions with the industry players**
- **We use reliable sources of information and databases. And information from such sources is processed by us and included in the report**



## **Scope of the Report**

The report titled “Market Survey cum Detailed Techno Economic Feasibility Report on Zinc Sulphate (Agriculture Grade)” provides an insight into the Zinc Sulphate (Agriculture Grade) market in India with focus on uses and applications, Manufacturing Process, Process Flow Sheets, Plant Layout and Project Financials of Zinc Sulphate (Agriculture Grade) project. The report assesses the market sizing and growth of the Indian Zinc Sulphate (Agriculture Grade) Industry. While expanding a current business or while venturing into new business, entrepreneurs are often faced with the dilemma of zeroing in on a suitable product/line. And before diversifying/venturing into any product, they wish to study the following aspects of the identified product:

- **Good Present/Future Demand**
- **Export-Import Market Potential**
- **Raw Material & Manpower Availability**
- **Project Costs and Payback Period**

**We at NPCS, through our reliable expertise in the project consultancy and market research field, have demystified the situation by putting forward the emerging business opportunity in the Zinc Sulphate (Agriculture Grade) sector in India along with its business prospects. Through this report we have identified Zinc Sulphate (Agriculture Grade) project as a lucrative investment avenue.**

# Tags

Zinc Sulphate Plant, Process for Production of Zinc Sulphate, Processing Plant for Zinc Sulphate, Zinc Sulphate Manufacturing Process, Preparation of Zinc Sulfate, Zinc Sulphate Manufacturing Project Report, Zinc Sulphate, Zinc Sulphate Plant Machinery, Zinc Sulphate Plant Cost, Znso4 Manufacturing Process, Manufacturing Process of Zinc Sulphate, Process of Preparing Zinc-Sulphate, Production of Zinc Sulphate, Manufacturing of Zinc Sulphate, Zinc Sulphate Manufacturing Unit, Process of Zinc Sulphate Manufacturing, Manufacture of Zinc Sulphate, Zinc Sulphate Manufacture, Project Report on Manufacturing of Zinc Sulphate, Making of Zinc Sulphate, Processing Plant for Zinc Sulphate, Znso4 Manufacturing Process, Production Process of Zinc Sulfate, Manufacturing Process of Znso4, Zinc Sulphate Production, Zinc Sulphate (Agriculture Grade) Manufacturing Plant, Agriculture Fertilizer, White Vitriol (Zinc Sulfate), Production of White Vitriol (Zinc Sulfate), How to Start Manufacturing Business of White Vitriol (Zinc Sulfate), White Vitriol (Zinc Sulfate) Manufacturing Business Plan, Production of White Vitriol (Zinc Sulfate), White Vitriol (Zinc Sulfate) Manufacturing Plant, Zinc Sulphate (Agriculture Grade) Manufacturing project ideas, Projects on Small Scale Industries, Small scale industries projects ideas, Zinc Sulphate Manufacturing Based Small Scale Industries Projects,

Project profile on small scale industries, How to Start Zinc Sulphate (Agriculture Grade) Manufacturing Industry in India, Zinc Sulphate (Agriculture Grade) Manufacturing Projects, New project profile on Zinc Sulphate (Agriculture Grade) Manufacturing industries, Project Report on Zinc Sulphate (Agriculture Grade) Manufacturing Industry, Detailed Project Report on Zinc Sulphate Manufacturing, Project Report on Zinc Sulphate (Agriculture Grade) Manufacturing, Pre-Investment Feasibility Study on Zinc Sulphate (Agriculture Grade) Manufacturing, Techno-Economic feasibility study on Zinc Sulphate Manufacturing, Feasibility report on Zinc Sulphate Manufacturing, Free Project Profile on Zinc Sulphate Manufacturing ,Project profile on Znso4 Manufacturing, Download free project profile on Znso4 Manufacturing, Startup Project for Zinc Sulphate (Agriculture Grade) Manufacturing, Zinc Sulphate Fertilizer Production

**Niir Project Consultancy Services (NPCS)  
can provide Detailed Project Report on  
Zinc Sulphate (Agriculture Grade)  
Manufacturing Business.**

**Agro Chemicals.**

**Zinc Sulphate (White Vitriol) Fertilizer.**

**See more**

<https://goo.gl/BZXdcd>

<https://goo.gl/q1XQhg>



*Visit us at*

[www.entrepreneurindia.co](http://www.entrepreneurindia.co)



**Take a look at  
Niir Project Consultancy Services  
on #Street View**

<https://goo.gl/VstWkd>

*Locate us on  
Google Maps*

<https://goo.gl/maps/BKkUtg9gevT2>

## OUR CLIENTS

Our inexhaustible Client list includes public-sector companies, Corporate Houses, Government undertaking, individual entrepreneurs, NRI, Foreign investors, non-profit organizations and educational institutions from all parts of the World. The list is just a glimpse of our esteemed & satisfied Clients.

**Click here to take a look**

**<https://goo.gl/G3ICjV>**





# **Free Instant Online Project**

## **Identification and Selection Service**

**Our Team has simplified the process for you by providing a "Free Instant Online Project Identification & Selection" search facility to identify projects based on multiple search parameters related to project costs namely: Plant & Machinery Cost, Total Capital Investment, Cost of the project, Rate of Return% (ROR) and Break Even Point % (BEP). You can sort the projects on the basis of mentioned pointers and identify a suitable project matching your investment requisites.....[Read more](#)**



# Download Complete List of Project

## Reports:

### ▪ Detailed Project Reports

**NPCS is manned by engineers, planners, specialists, financial experts, economic analysts and design specialists with extensive experience in the related industries.**

**Our Market Survey cum Detailed Techno Economic Feasibility Report provides an insight of market in India. The report assesses the market sizing and growth of the Industry. While expanding a current business or while venturing into new business, entrepreneurs are often faced with the dilemma of zeroing in on a suitable product/line.**



**And before diversifying/venturing into any product, they wish to study the following aspects of the identified product:**

- **Good Present/Future Demand**
- **Export-Import Market Potential**
- **Raw Material & Manpower Availability**
- **Project Costs and Payback Period**

**The detailed project report covers all aspect of business, from analyzing the market, confirming availability of various necessities such as Manufacturing Plant, Detailed Project Report, Profile, Business Plan, Industry Trends, Market Research, Survey, Manufacturing Process, Machinery, Raw Materials, Feasibility Study, Investment Opportunities, Cost and Revenue, Plant Economics, Production Schedule,**



**Working Capital Requirement, uses and applications, Plant Layout, Project Financials, Process Flow Sheet, Cost of Project, Projected Balance Sheets, Profitability Ratios, Break Even Analysis. The DPR (Detailed Project Report) is formulated by highly accomplished and experienced consultants and the market research and analysis are supported by a panel of experts and digitalized data bank.**

**We at NPCS, through our reliable expertise in the project consultancy and market research field, have demystified the situation by putting forward the emerging business opportunity in India along with its business prospects.....[Read more](#)**



# Contact us

## **NIIR PROJECT CONSULTANCY SERVICES**

106-E, Kamla Nagar, Opp. Spark Mall,

New Delhi-110007, India.

Email: [npcs.ei@gmail.com](mailto:npcs.ei@gmail.com) , [info@entrepreneurindia.co](mailto:info@entrepreneurindia.co)

Tel: +91-11-23843955, 23845654, 23845886, 8800733955

Mobile: +91-9811043595

Fax: +91-11-23845886

Website : [www.entrepreneurindia.co](http://www.entrepreneurindia.co) , [www.niir.org](http://www.niir.org)

Take a look at NIIR PROJECT CONSULTANCY SERVICES on #StreetView

<https://goo.gl/VstWkd>



# **Niir PROJECT CONSULTANCY SERVICES**

**An ISO 9001:2015 Company**



[www.entrepreneurindia.co](http://www.entrepreneurindia.co)

# Who are we?

- *One of the leading reliable names in industrial world for providing the most comprehensive technical consulting services*
- *We adopt a systematic approach to provide the strong fundamental support needed for the effective delivery of services to our Clients' in India & abroad*



*We at NPCS want to grow with you by providing solutions scale to suit your new operations and help you reduce risk and give a high return on application investments. We have successfully achieved top-notch quality standards with a high level of customer appreciation resulting in long lasting relation and large amount of referral work through technological breakthrough and innovative concepts. A large number of our Indian, Overseas and NRI Clients have appreciated our expertise for excellence which speaks volumes about our commitment and dedication to every client's success.*





*We bring deep, functional expertise, but are known for our holistic perspective: we capture value across boundaries and between the silos of any organization. We have proven a multiplier effect from optimizing the sum of the parts, not just the individual pieces. We actively encourage a culture of innovation, which facilitates the development of new technologies and ensures a high quality product.*



## What do we offer?

- *Project Identification*
- *Detailed Project Reports/Pre-feasibility Reports*
- *Market Research Reports*
- *Business Plan*
- *Technology Books and Directory*
- *Industry Trend*
- *Databases on CD-ROM*
- *Laboratory Testing Services*
- *Turnkey Project Consultancy/Solutions*
- *Entrepreneur India (An Industrial Monthly Journal)*

## How are we different ?

- *We have two decades long experience in project consultancy and market research field*
- *We empower our customers with the prerequisite know-how to take sound business decisions*
- *We help catalyze business growth by providing distinctive and profound market analysis*
- *We serve a wide array of customers , from individual entrepreneurs to Corporations and Foreign Investors*
- *We use authentic & reliable sources to ensure business precision*



# Our Approach

**Requirement collection**

**Thorough analysis of the project**

**Economic feasibility study of the Project**

**Market potential survey/research**

**Report Compilation**

# Contact us

## NIIR PROJECT CONSULTANCY SERVICES

106-E, Kamla Nagar, Opp. Spark Mall,  
New Delhi-110007, India.

Email: [npcs.ei@gmail.com](mailto:npcs.ei@gmail.com) , [info@entrepreneurindia.co](mailto:info@entrepreneurindia.co)

Tel: +91-11-23843955, 23845654, 23845886, 8800733955

Mobile: +91-9811043595

Fax: +91-11-23845886

Website : [www.entrepreneurindia.co](http://www.entrepreneurindia.co) , [www.niir.org](http://www.niir.org)

Take a look at NIIR PROJECT CONSULTANCY SERVICES on #StreetView

<https://goo.gl/VstWkd>



# Follow us



➤ <https://www.linkedin.com/company/niir-project-consultancy-services>



➤ <https://www.facebook.com/NIIR.ORG>



➤ <https://www.youtube.com/user/NIIRproject>



➤ <https://plus.google.com/+EntrepreneurIndiaNewDelhi>



➤ [https://twitter.com/npcs\\_in](https://twitter.com/npcs_in)



➤ <https://www.pinterest.com/npcsindia/>





**For more information, visit us at:**

**[www.niir.org](http://www.niir.org)**

**[www.entrepreneurindia.co](http://www.entrepreneurindia.co)**



**[www.entrepreneurindia.co](http://www.entrepreneurindia.co)**