

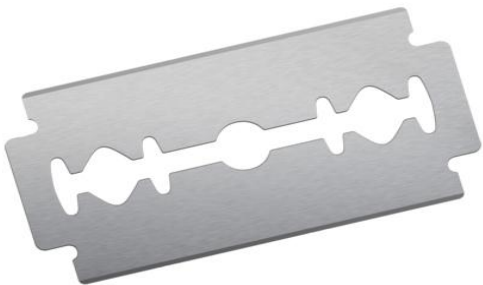
# **Production of Razor Blade (Double Edge).**

*Global Men's Grooming Market is  
estimated to be worth about 29.14  
billion U.S. Dollars*

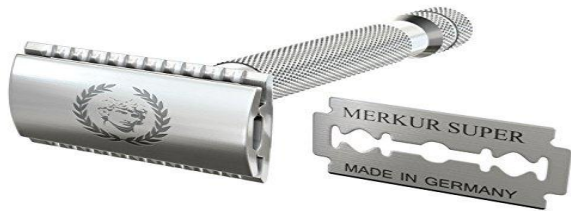
# **Introduction**

**A razor blade is a blade used in a razor, typically a flat piece of metal with a sharp edge or edges used in a safety razor which is used to remove unwanted hair from the face or body.**

**A razor is a bladed tool primarily used in the removal of unwanted body hair through the act of shaving. Kinds of razors include straight razors, disposable razor; the double-edged safety razor is a razor with a slant bar that can be used on both sides, with two open edges. The blade on the double-edged safety razor is slightly curved to allow for a smoother and cleaner shave.**



**Indian men's grooming market will grow at a CAGR of 22% by 2020. This growth is mainly due to the rising need to look well groomed, increasing per capita income, and rapid urbanization. The demand for men's grooming market has seen a rise in the last few years because of increased consciousness of their looks among the male customer. Also as more than 50% of the population is under the age group of 30, the industry has huge local market. Moreover, rising urban middle class population, and improved distribution channels in tier II and tier III cities, are also expected to stimulate growth in the market through 2020.**



**Men's grooming product can be divided into Bath & Shower products, Hair Care, Skin Care, Deodorants and Shaving products. Shaving products currently control the largest market share in terms of revenue in Indian men's grooming market. Indian shaving products market is expected to grow at a CAGR of 20% till 2020 and maintain its market share position even in 2020.**

**India exported US\$ 45.71 million worth of safety razor blades and the overall exported quantity was 4 million Kgs. in FY 2014-15. UAE, Singapore, Ghana, Nepal and Sudan were the top five nations importing Indian safety razor blades in 2014-15.**

**India imported US\$ 41.35 million worth of safety razor blades and the overall imported quantity was 1.30 million kgs. In FY 2014-15. Germany, China, Poland, Egypt and Mexico were the top five nations exporting safety razor blades to India in 2014-15.**

**Indian men personal care market is moving beyond basic shaving products and demand for beard and skincare products is increasing among male consumers, said a few e-commerce companies today. "The men's grooming market is going through a surge.**



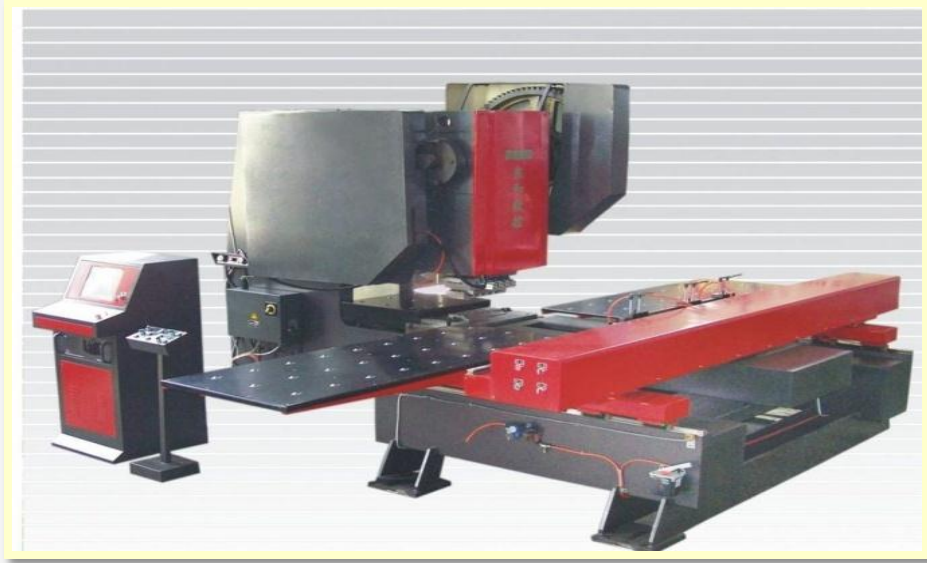
**The global Disposable Razor Blades Market valuation is expected to rise by 2025. The changing fashion trends and increasing emphasis on external appearances are expected to drive market demand from 2017 to 2025. Advances in razors and blades coupled with rising demand for female shaving products can bolster market growth from 2013 to 2025 (forecast period). Manufacturers in the industry are introducing blades with environment-friendly materials in order to provide a smooth shave. Blades are designed to be more flexible to cater to the contours of faces of men.**

**Rise in disposable incomes of consumers and developments in blades can augur the market for disposable razor blades during the forecast period.**

**Men's grooming is expected to grow at a CAGR of 5% at constant 2016 prices over the forecast period, with sales set to reach INR105.5 billion in 2021. The expected continued strong performance of the Indian economy over the forecast period will help drive consumer income levels and spending. Consumers with increased disposable incomes over the forecast period are expected to shift from traditional blades to disposable razors and system razor sets.**

**The worldwide disposable razor blades market is segmented by product, end user, and region. By products, the market is divided into single and double edge razor blades. End user segments in the market are categorized into male and female.**

# Machinery Photographs



**CNG High Speed Punching  
Machine**



**Tunnel Furnace**





**Printing Machine**



**Polymer Coating Machine**

# Project at a Glance

PROJECT AT A GLANCE				( ` in lacs)			
COST OF PROJECT				MEANS OF FINANCE			
Particulars	Existing	Proposed	Total	Particulars	Existing	Proposed	Total
Land & Site Development Exp.	0.00	190.00	190.00	Capital	0.00	331.42	331.42
Buildings	0.00	116.00	116.00	Share Premium	0.00	0.00	0.00
Plant & Machineries	0.00	681.00	681.00	Other Type Share			
Motor Vehicles	0.00	10.00	10.00	Capital	0.00	0.00	0.00
Office Automation Equipments	0.00	68.00	68.00	Reserves & Surplus	0.00	0.00	0.00
Technical Knowhow Fees & Exp.	0.00	30.00	30.00	Cash Subsidy	0.00	0.00	0.00
Franchise & Other Deposits	0.00	0.00	0.00	Internal Cash Accruals	0.00	0.00	0.00
Preliminary & Pre-operative Exp	0.00	5.00	5.00	Long/Medium Term Borrowings	0.00	994.25	994.25
Provision for Contingencies	0.00	64.00	64.00	Unsecured Debentures / Bonds	0.00	0.00	0.00
Margin Money - Working Capital	0.00	161.66	161.66	Loans/Deposits	0.00	0.00	0.00
<b>TOTAL</b>	<b>0.00</b>	<b>1325.66</b>	<b>1325.66</b>	<b>TOTAL</b>	<b>0.00</b>	<b>1325.66</b>	<b>1325.66</b>

# Project at a Glance

Year	Annualised		Book Value	Debt	Dividend	Retained Earnings		Payout	Probable Market Price	P/E Ratio	Yield Price/Book Value
	EPS	CEPS	Per Share		Per Share	Per Share				No.of Times	
						%		%			%
1-2	5.38	9.39	15.38	24.00	0.00	100.00	5.38	0.00	5.38	1.00	0.00
2-3	8.15	11.60	23.53	18.00	0.00	100.00	8.15	0.00	8.15	1.00	0.00
3-4	10.89	13.87	34.41	12.00	0.00	100.00	10.89	0.00	10.89	1.00	0.00
4-5	13.54	16.11	47.96	6.00	0.00	100.00	13.54	0.00	13.54	1.00	0.00
5-6	16.08	18.30	64.04	0.00	0.00	100.00	16.08	0.00	16.08	1.00	0.00

# Project at a Glance

Year	D. S. C. R.			Debt / Deposits Debt	Equity as-Equity	Total Net Worth	Return on Net Worth	Profitability Ratio					Assets Turnover Ratio	Current Ratio
	Individual	Cumulative	Overall					GPM	PBT	PAT	Net Contribution	P/V Ratio		
	(Number of times)			(Number of times)		%	%	%	%	%	%			
Initial				3.00	3.00									
1-2	1.36	1.36		1.56	1.56	2.56		14.91%	7.76%	5.79%	1397.91	45.42%	1.72	1.11
2-3	1.65	1.50		0.77	0.77	1.52		17.06%	11.17%	7.52%	1379.95	38.43%	1.85	1.33
3-4	2.00	1.65	2.00	0.35	0.35	0.94		18.49%	13.57%	8.79%	1571.11	38.28%	1.88	1.60
4-5	2.41	1.82		0.13	0.13	0.60		19.43%	15.25%	9.72%	1762.27	38.17%	1.83	1.90
5-6	2.91	2.00		0.00	0.00	0.39		20.03%	16.42%	10.39%	1953.43	38.08%	1.74	2.75

# Project at a Glance

## BEP

BEP - Maximum Utilisation Year	5
Cash BEP (% of Installed Capacity)	50.98%
Total BEP (% of Installed Capacity)	54.74%
IRR, PAYBACK and FACR	
Internal Rate of Return .. ( In %age )	27.36%
Payback Period of the Project is ( In Years )	2 Years 3 Months
Fixed Assets Coverage Ratio ( No. of times )	7.550

# Major Queries/Questions Answered in the Report?

- 1. What is Razor Blade (Double Edge) Manufacturing industry ?**
- 2. How has the Razor Blade (Double Edge) Manufacturing industry performed so far and how will it perform in the coming years ?**
- 3. What is the Project Feasibility of Razor Blade (Double Edge) Manufacturing Plant ?**
- 4. What are the requirements of Working Capital for setting up Razor Blade (Double Edge) Manufacturing plant ?**

- 5. What is the structure of the Razor Blade (Double Edge) Manufacturing Business and who are the key/major players ?**
- 6. What is the total project cost for setting up Razor Blade (Double Edge) Manufacturing Business?**
- 7. What are the operating costs for setting up Razor Blade (Double Edge) Manufacturing plant ?**
- 8. What are the machinery and equipment requirements for setting up Razor Blade (Double Edge) Manufacturing plant ?**

- 9. Who are the Suppliers and Manufacturers of Plant & Machinery for setting up Razor Blade (Double Edge) Manufacturing plant ?**
- 10. What are the requirements of raw material for setting up Razor Blade (Double Edge) Manufacturing plant ?**
- 11. Who are the Suppliers and Manufacturers of Raw materials for setting up Razor Blade (Double Edge) Manufacturing Business?**
- 12. What is the Manufacturing Process of Razor Blade (Double Edge)?**



- 13. What is the total size of land required for setting up Razor Blade (Double Edge) Manufacturing plant ?**
- 14. What will be the income and expenditures for Razor Blade (Double Edge) Manufacturing Business?**
- 15. What are the Projected Balance Sheets of Razor Blade (Double Edge) Manufacturing plant ?**
- 16. What are the requirement of utilities and overheads for setting up Razor Blade (Double Edge) Manufacturing plant?**
- 17. What is the Built up Area Requirement and cost for setting up Razor Blade (Double Edge) Manufacturing Business?**

**18. What are the Personnel (Manpower) Requirements for setting up Razor Blade (Double Edge) Manufacturing Business?**

**19. What are Statistics of Import & Export for Razor Blade (Double Edge)?**

**20. What is the time required to break-even of Razor Blade (Double Edge) Manufacturing Business?**

**21. What is the Break-Even Analysis of Razor Blade (Double Edge) Manufacturing plant?**

**22. What are the Project financials of Razor Blade (Double Edge) Manufacturing Business?**

- 23. What are the Profitability Ratios of Razor Blade (Double Edge) Manufacturing Project?**
- 24. What is the Sensitivity Analysis-Price/Volume of Razor Blade (Double Edge) Manufacturing plant?**
- 25. What are the Projected Pay-Back Period and IRR of Razor Blade (Double Edge) Manufacturing plant?**
- 26. What is the Process Flow Sheet Diagram of Razor Blade (Double Edge) Manufacturing project?**

- 27. What are the Market Opportunities for setting up Razor Blade (Double Edge) Manufacturing plant?**
- 28. What is the Market Study and Assessment for setting up Razor Blade (Double Edge) Manufacturing Business?**
- 29. What is the Plant Layout for setting up Razor Blade (Double Edge) Manufacturing Business?**

# Table of Contents of the Project Report



## **1. PROJECT LOCATION**

- 1.1. DISTRICT PROFILE & GEOTECHNICAL SITE CHARACTERIZATION
  - 1.1.1. General
  - 1.1.2. Geography
  - 1.1.3. Climate
  - 1.1.4. Map
  - 1.1.5. Industry
  - 1.1.6. Transport

## **2. INTRODUCTION**

## **3. BENEFITS**

## **4. B.I.S. SPECIFICATIONS**

- 4.1. IS: 7371 – 1982 SPECIFICATION FOR STAINLESS STEEL, SAFETY RAZOR BLADES (SECOND REVISION)
- 4.2. IS: 9294 – 1979 SPECIFICATION FOR COLD – ROLLED STAINLESS STEEL STRIPS FOR RAZOR BLADES
- 4.3. IS: 9476 – 1980 SPECIFICATION FOR COLD – ROLLED STEEL STRIPS FOR CARBON STEEL RAZOR BLADES
- 4.4. IS: 10009 – 1981 SPECIFICATION FOR BREAKER AND HOLDER, RAZOR BLADE, BARRAQUER'S PATTERN
- 4.5. IS: 13777 – 1993 SHAVING SYSTEMS – TWIN BLADE RAZOR HANDLES – SPECIFICATION

## **5. MARKET SURVEY**

- 5.1. EXIM SCENARIO IN INDIAN MEN'S GROOMING MARKET
- 5.2. INDIAN MEN MOVING BEYOND GILLETTE

- 5.3. GILLETTE THE INDIA CHAPTER
- 5.4. TRENDS
- 5.5. COMPETITIVE LANDSCAPE
- 5.6. PROSPECTS
- 5.7. THE GUARD RAZOR

## **6. EXPORT & IMPORT: ALL COUNTRIES**

- 6.1. EXPORT: ALL COUNTRIES
- 6.2. IMPORT: ALL COUNTRIES

## **7. FINANCIALS & COMPARISON OF MAJOR INDIAN PLAYERS/COMPANIES**

- 7.1. ABOUT FINANCIAL STATEMENTS OF CMIE DATABASE
- 7.2. PROFITS & APPROPRIATIONS
- 7.3. TOTAL LIABILITIES
- 7.4. TOTAL ASSETS
- 7.5. NET CASH FLOW FROM OPERATING ACTIVITIES
- 7.6. SECTION – I
  - 7.6.1. Name of Company with Contact Details
  - 7.6.2. Name of Director(S)
  - 7.6.3. Plant Capacity
  - 7.6.4. Location of Plant
  - 7.6.5. Name of Raw Material(S) Consumed with Quantity & Cost
- 7.7. SECTION – II
  - 7.7.1. Assets
  - 7.7.2. Cash Flow
  - 7.7.3. Cost as % Ge of Sales
  - 7.7.4. Forex Transaction
  - 7.7.5. Growth in Assets & Liabilities

- 7.7.6. Growth in Income & Expenditure
- 7.7.7. Income & Expenditure
- 7.7.8. Liabilities
- 7.7.9. Liquidity Ratios
- 7.7.10. Profitability Ratio
- 7.7.11. Profits
- 7.7.12. Return Ratios
- 7.7.13. Structure of Assets & Liabilities (%)
- 7.7.14. Working Capital & Turnover Ratios

## **8. COMPANY PROFILE OF MAJOR PLAYERS**

### **9. EXPORT & IMPORT STATISTICS OF INDIA**

- 9.1. EXPORT STATISTICS DATA FOR RAZOR BLADE
- 9.2. IMPORT STATISTICS DATA FOR RAZOR BLADE

## **10. PRESENT MANUFACTURERS**

## **11. RAW MATERIAL**

## **12. MANUFACTURING PROCESS**

## **13. PROCESS FLOW DIAGRAM**



## **14. SUPPLIERS OF PLANT & MACHINERY**

## **15. SUPPLIERS OF RAW MATERIAL**

## **16. PHOTOGRAPHS/IMAGES FOR REFERENCE**

- 16.1. PRODUCT PHOTOGRAPHS
- 16.2. MACHINERY PHOTOGRAPHS
- 16.3. RAW MATERIAL PHOTOGRAPHS

## **17. PLANT LAYOUT**

# *Project Financials*

• <b>Project at a Glance</b>	<b>Annexure</b>
• Assumptions for Profitability workings .....	1
• Plant Economics.....	2
• Production Schedule.....	3
• Land & Building.....	4
Factory Land & Building	
Site Development Expenses	

- **Plant & Machinery.....5**
  - Indigenous Machineries**
  - Other Machineries (Miscellaneous, Laboratory etc.)**
  
- **Other Fixed Assets.....6**
  - Furniture & Fixtures**
  - Pre-operative and Preliminary Expenses**
  - Technical Knowhow**
  - Provision of Contingencies**
  
- **Working Capital Requirement Per Month.....7**
  - Raw Material**
  - Packing Material**
  - Lab & ETP Chemical Cost**
  - Consumable Store**

- **Overheads Required Per Month and Per Annum.....8**  
**Utilities & Overheads (Power, Water and Fuel Expenses etc.)**  
**Royalty and Other Charges**  
**Selling and Distribution Expenses**
  
- **Salary and Wages .....9**
  
- **Turnover Per Annum .....10**
  
- **Share Capital.....11**  
**Equity Capital**  
**Preference Share Capital**

- **Annexure 1 :: Cost of Project and Means of Finance**
- **Annexure 2 :: Profitability and Net Cash Accruals**
  - **Revenue/Income/Realisation**
  - **Expenses/Cost of Products/Services/Items**
  - **Gross Profit**
  - **Financial Charges**
  - **Total Cost of Sales**
  - **Net Profit After Taxes**
  - **Net Cash Accruals**

- **Annexure 3 :: Assessment of Working Capital requirements**

- **Current Assets**
- **Gross Working Capital**
- **Current Liabilities**
- **Net Working Capital**
- **Working Note for Calculation of Work-in-process**

- **Annexure 4 :: Sources and Disposition of Funds**

- **Annexure 5 :: Projected Balance Sheets**

- **ROI (Average of Fixed Assets)**
- **RONW (Average of Share Capital)**
- **ROI (Average of Total Assets)**

- **Annexure 6 :: Profitability Ratios**

- **D.S.C.R**
- **Earnings Per Share (EPS)**
- **Debt Equity Ratio**

• **Annexure 7 :: Break-Even Analysis**

- **Variable Cost & Expenses**
- **Semi-Variable/Semi-Fixed Expenses**
- **Profit Volume Ratio (PVR)**
- **Fixed Expenses / Cost**
- **B.E.P**



- **Annexure 8 to 11 :: Sensitivity Analysis-Price/Volume**

- **Resultant N.P.B.T**
- **Resultant D.S.C.R**
- **Resultant PV Ratio**
- **Resultant DER**
- **Resultant ROI**
- **Resultant BEP**

- **Annexure 12 :: Shareholding Pattern and Stake Status**

- **Equity Capital**

- **Preference Share Capital**

- **Annexure 13 :: Quantitative Details-Output/Sales/Stocks**

- **Determined Capacity P.A of Products/Services**

- **Achievable Efficiency/Yield % of Products/Services/Items**

- **Net Usable Load/Capacity of Products/Services/Items**

- **Expected Sales/ Revenue/ Income of Products/ Services/ Items**

- **Annexure 14** :: **Product wise Domestic Sales Realisation**
- **Annexure 15** :: **Total Raw Material Cost**
- **Annexure 16** :: **Raw Material Cost per unit**
- **Annexure 17** :: **Total Lab & ETP Chemical Cost**
- **Annexure 18** :: **Consumables, Store etc.**
- **Annexure 19** :: **Packing Material Cost**
- **Annexure 20** :: **Packing Material Cost Per Unit**

- **Annexure 21** :: **Employees Expenses**
- **Annexure 22** :: **Fuel Expenses**
- **Annexure 23** :: **Power/Electricity Expenses**
- **Annexure 24** :: **Royalty & Other Charges**
- **Annexure 25** :: **Repairs & Maintenance Expenses**
- **Annexure 26** :: **Other Manufacturing Expenses**
- **Annexure 27** :: **Administration Expenses**
- **Annexure 28** :: **Selling Expenses**

- **Annexure 29 :: Depreciation Charges – as per Books (Total)**
- **Annexure 30 :: Depreciation Charges – as per Books (P & M)**
- **Annexure 31 :: Depreciation Charges - as per IT Act WDV (Total)**
- **Annexure 32 :: Depreciation Charges - as per IT Act WDV (P & M)**
- **Annexure 33 :: Interest and Repayment - Term Loans**
- **Annexure 34 :: Tax on Profits**
- **Annexure 35 :: Projected Pay-Back Period and IRR**

# Reasons for Buying our Report:

- **This report helps you to identify a profitable project for investing or diversifying into by throwing light to crucial areas like industry size, market potential of the product and reasons for investing in the product**
- **This report provides vital information on the product like it's characteristics and segmentation**
- **This report helps you market and place the product correctly by identifying the target customer group of the product**

- **This report helps you understand the viability of the project by disclosing details like machinery required, project costs and snapshot of other project financials**
- **The report provides a glimpse of government regulations applicable on the industry**
- **The report provides forecasts of key parameters which helps to anticipate the industry performance and make sound business decisions**

# Our Approach:

- **Our research reports broadly cover Indian markets, present analysis, outlook and forecast for a period of five years.**
- **The market forecasts are developed on the basis of secondary research and are cross-validated through interactions with the industry players**
- **We use reliable sources of information and databases. And information from such sources is processed by us and included in the report**



## ***Scope of the Report***

**The report titled “Market Survey cum Detailed Techno Economic Feasibility Report on Razor Blade (Double Edge).” provides an insight into Razor Blade (Double Edge) market in India with focus on uses and applications, Manufacturing Process, Process Flow Sheets, Plant Layout and Project Financials of Razor Blade (Double Edge) project. The report assesses the market sizing and growth of the Indian Razor Blade (Double Edge) Industry. While expanding a current business or while venturing into new business, entrepreneurs are often faced with the dilemma of zeroing in on a suitable product/line. And before diversifying/venturing into any product, they wish to study the following aspects of the identified product:**

- **Good Present/Future Demand**
- **Export-Import Market Potential**
- **Raw Material & Manpower Availability**
- **Project Costs and Payback Period**

**We at NPCS, through our reliable expertise in the project consultancy and market research field, have demystified the situation by putting forward the emerging business opportunity in the Razor Blade (Double Edge) sector in India along with its business prospects. Through this report we have identified Razor Blade (Double Edge) project as a lucrative investment avenue.**

# Tags

How to Start a Razor Blade Manufacturing Company, Double Edge Razor Blades, How Safety Razor is Made, Shaving Razor Blade Manufacturing Project, Safety Razor Blades Industry, Razor Blade Production, Razor Blade Manufacturing Cost, Disposable Razor Manufacturing Process, Shaving Blade Manufacturing, Shaving Blade Manufacturing Plant, Shaving Blade Manufacture in India, Razor Blades Manufacture, Safety Double Edge Razor Blade Plan, Razor Blade Making, Manufacturing of Razor Blade, Razor Blade Company, Safety Razor, Disposable Razor Blades, Razor Blade Manufacturing Plant, How Double Edged Razor Blades are made? Razor Blade Manufacturing, Razor Production, Manufacture of Safety Razor Blades, How to Start a Razor Blade Manufacturing Industry, Disposable Razor, Disposable Razor Manufacture, Business Ideas to Start Manufacturing of Safety Razor, How to Start Razor Blade Manufacturing Business, How to Start a Razors & Razor Blades Business, Razor Blade Manufacturing Cost, Production of Razor Blade (Double Edge), Razor Blade (Double Edge) Production, Safety Razor Blade Industry,

Razor Blade Factory, Razor Blade Manufacturing project ideas, Projects on Small Scale Industries, Small scale industries projects ideas, Razor Blade Manufacturing Based Small Scale Industries Projects, Project profile on small scale industries, How to Start Razor Blade Manufacturing Industry in India, Razor Blade Manufacturing Projects, New project profile on Razor Blade Manufacturing industries, Project Report on Razor Blade Manufacturing Industry, Detailed Project Report on Razor Blade (Double Edge) Production, Project Report on Razor Blade (Double Edge) Production, Pre-Investment Feasibility Study on Razor Blade (Double Edge) Production, Techno-Economic feasibility study on Razor Blade (Double Edge) Production, Feasibility report on Razor Blade (Double Edge) Production, Free Project Profile on Razor Blade (Double Edge) Production, Project profile on Razor Blade (Double Edge) Production, Download free project profile on Razor Blade (Double Edge) Production, Startup Project for Razor Blade (Double Edge) Production, Project report for bank loan, Project report for bank finance, Project report format for bank loan in excel, Excel Format of Project Report and CMA Data, Project Report Bank Loan Excel

**Niir Project Consultancy Services (NPCS)  
can provide Detailed Project Report on  
Production of Razor Blade  
(Double Edge).**

**Global Men's Grooming Market is estimated to be  
worth about 29.14 billion U.S. Dollars**

**See more**

**<https://goo.gl/v9ReZv>**



*Visit us at*

[www.entrepreneurindia.co](http://www.entrepreneurindia.co)



[www.entrepreneurindia.co](http://www.entrepreneurindia.co)

**Take a look at  
Niir Project Consultancy Services  
on #Street View**

<https://goo.gl/VstWkd>

*Locate us on  
Google Maps*

<https://goo.gl/maps/BKkUtq9gevT2>

## OUR CLIENTS

Our inexhaustible Client list includes public-sector companies, Corporate Houses, Government undertaking, individual entrepreneurs, NRI, Foreign investors, non-profit organizations and educational institutions from all parts of the World. The list is just a glimpse of our esteemed & satisfied Clients.

**Click here to take a look**  
**<https://goo.gl/G3ICjV>**



# **Free Instant Online Project**

## **Identification and Selection Service**

**Our Team has simplified the process for you by providing a "Free Instant Online Project Identification & Selection" search facility to identify projects based on multiple search parameters related to project costs namely: Plant & Machinery Cost, Total Capital Investment, Cost of the project, Rate of Return% (ROR) and Break Even Point % (BEP). You can sort the projects on the basis of mentioned pointers and identify a suitable project matching your investment requisites.....[Read more](#)**



# Download Complete List of Project

## Reports:

### ▪ Detailed Project Reports

**NPCS is manned by engineers, planners, specialists, financial experts, economic analysts and design specialists with extensive experience in the related industries.**

**Our Market Survey cum Detailed Techno Economic Feasibility Report provides an insight of market in India. The report assesses the market sizing and growth of the Industry. While expanding a current business or while venturing into new business, entrepreneurs are often faced with the dilemma of zeroing in on a suitable product/line.**



**And before diversifying/venturing into any product, they wish to study the following aspects of the identified product:**

- **Good Present/Future Demand**
- **Export-Import Market Potential**
- **Raw Material & Manpower Availability**
- **Project Costs and Payback Period**

**The detailed project report covers all aspect of business, from analyzing the market, confirming availability of various necessities such as Manufacturing Plant, Detailed Project Report, Profile, Business Plan, Industry Trends, Market Research, Survey, Manufacturing Process, Machinery, Raw Materials, Feasibility Study, Investment Opportunities, Cost and Revenue, Plant Economics, Production Schedule,**



**Working Capital Requirement, uses and applications, Plant Layout, Project Financials, Process Flow Sheet, Cost of Project, Projected Balance Sheets, Profitability Ratios, Break Even Analysis. The DPR (Detailed Project Report) is formulated by highly accomplished and experienced consultants and the market research and analysis are supported by a panel of experts and digitalized data bank.**

**We at NPCS, through our reliable expertise in the project consultancy and market research field, have demystified the situation by putting forward the emerging business opportunity in India along with its business prospects.....[Read more](#)**



# Contact us

## **NIIR PROJECT CONSULTANCY SERVICES**

106-E, Kamla Nagar, Opp. Spark Mall,

New Delhi-110007, India.

Email: [npcs.ei@gmail.com](mailto:npcs.ei@gmail.com) , [info@entrepreneurindia.co](mailto:info@entrepreneurindia.co)

Tel: +91-11-23843955, 23845654, 23845886, 8800733955

Mobile: +91-9811043595

Fax: +91-11-23845886

Website : [www.entrepreneurindia.co](http://www.entrepreneurindia.co) , [www.niir.org](http://www.niir.org)

Take a look at NIIR PROJECT CONSULTANCY SERVICES on #StreetView

<https://goo.gl/VstWkd>



# **Niir PROJECT CONSULTANCY SERVICES**

**An ISO 9001:2015 Company**



[www.entrepreneurindia.co](http://www.entrepreneurindia.co)

## Who are we?

- *One of the leading reliable names in industrial world for providing the most comprehensive technical consulting services*
- *We adopt a systematic approach to provide the strong fundamental support needed for the effective delivery of services to our Clients' in India & abroad*



*We at NPCS want to grow with you by providing solutions scale to suit your new operations and help you reduce risk and give a high return on application investments. We have successfully achieved top-notch quality standards with a high level of customer appreciation resulting in long lasting relation and large amount of referral work through technological breakthrough and innovative concepts. A large number of our Indian, Overseas and NRI Clients have appreciated our expertise for excellence which speaks volumes about our commitment and dedication to every client's success.*





*We bring deep, functional expertise, but are known for our holistic perspective: we capture value across boundaries and between the silos of any organization. We have proven a multiplier effect from optimizing the sum of the parts, not just the individual pieces. We actively encourage a culture of innovation, which facilitates the development of new technologies and ensures a high quality product.*



## What do we offer?

- *Project Identification*
- *Detailed Project Reports/Pre-feasibility Reports*
- *Market Research Reports*
- *Business Plan*
- *Technology Books and Directory*
- *Industry Trend*
- *Databases on CD-ROM*
- *Laboratory Testing Services*
- *Turnkey Project Consultancy/Solutions*
- *Entrepreneur India (An Industrial Monthly Journal)*

## How are we different ?

- *We have two decades long experience in project consultancy and market research field*
- *We empower our customers with the prerequisite know-how to take sound business decisions*
- *We help catalyze business growth by providing distinctive and profound market analysis*
- *We serve a wide array of customers , from individual entrepreneurs to Corporations and Foreign Investors*
- *We use authentic & reliable sources to ensure business precision*



# Our Approach

**Requirement collection**

**Thorough analysis of the project**

**Economic feasibility study of the Project**

**Market potential survey/research**

**Report Compilation**



# Contact us

## NIIR PROJECT CONSULTANCY SERVICES

106-E, Kamla Nagar, Opp. Spark Mall,  
New Delhi-110007, India.

Email: [npcs.ei@gmail.com](mailto:npcs.ei@gmail.com) , [info@entrepreneurindia.co](mailto:info@entrepreneurindia.co)

Tel: +91-11-23843955, 23845654, 23845886, 8800733955

Mobile: +91-9811043595

Fax: +91-11-23845886

Website : [www.entrepreneurindia.co](http://www.entrepreneurindia.co) , [www.niir.org](http://www.niir.org)

Take a look at NIIR PROJECT CONSULTANCY SERVICES on #StreetView

<https://goo.gl/VstWkd>



# Follow us



➤ <https://www.linkedin.com/company/niir-project-consultancy-services>



➤ <https://www.facebook.com/NIIR.ORG>



➤ <https://www.youtube.com/user/NIIRproject>



➤ <https://plus.google.com/+EntrepreneurIndiaNewDelhi>



➤ [https://twitter.com/npcs\\_in](https://twitter.com/npcs_in)



➤ <https://www.pinterest.com/npcsindia/>





**For more information, visit us at:**

[www.niir.org](http://www.niir.org)

[www.entrepreneurindia.co](http://www.entrepreneurindia.co)



[www.entrepreneurindia.co](http://www.entrepreneurindia.co)