

Menthol Crystal and Mentha Oil Manufacturing Industry.

Minting Money with Mint Oil.

Extraction of Mentha Oil & Crystal from Mint Leaves



[NPCS/1192/22616]

www.entrepreneurindia.co



shutterstock.com - 772272850



Introduction

Menthol crystals are a natural product, cool and refreshing and smelling of mint. Menthol is a compound derived from the extraction of oil from mint and was formerly known as peppermint camphor. Menthol crystals work well in any product needing a strong flavor and the ability to relieve pain and soothe the body.



Uses

Menthol's crystals are used in cosmetics, lip balms, creams, toothpaste, mouth fresheners, cough drops and shampoos.

Menthol crystals relieve muscle pains, working as an analgesic.

Menthol can clear up coughing and breathing problems. Menthol crystals' ability to dissolve in alcohol and oil and their strong smell make them a desirable product for home fragrances and perfumes.



Mentha Oil

Mentha Oil is a colorless or pale yellow, clear liquid. It has a characteristic, pleasant aroma and has a pungent taste, followed by a cool aftertaste. It is practically insoluble in water.

General Characteristics

- **Mentha oil is obtained by steam distillation of Mentha arvensis leaves.**
- **Mentha oil and its constituents and derivatives are used in food, pharmaceutical and perfumery and flavouring industry.**



- **Menthol is the main constituent of mentha oil and slow cooling through refrigeration, crystallization, centrifugation and drying is done to obtain it. It is used in the manufacture of lozenges, toothpastes, pain balms, cold balms etc.**
- **Mentha is widely cultivated in India and its leaves are used in making sauces/chatni in most households.**



Mentha oil is one of the important essential oils and is extracted from herb Mentha arvensis through distillation process. It is widely used in food and flavourings. In addition to being a popular flavoring agent in food and confectionery preparation, natural menthol has cooling and soothing effect on skin and mucous membrane of human body, making it a useful ingredient in pharmaceuticals and cosmetics industry.

India is the second largest country in production of mints and its derivatives. India is exporting mints and its derivatives throughout the world worth Rs. 60-70 crores annually.



The consumption pattern of mentha in India has made it an important crop. Mentha in India has reached out to all most all the households and has made a major impact because of the qualities present in it. In fact, India is the leading consumer of mentha and mentha oil. Sauces are made from mentha leaves. Increasing rate of production of mentha oil has made India the largest producer and exporter in the world. The mint oil production in India hovers around 45000 tons and exports around 30000 tons annually.



India exports different types of mint oil to countries including China, the U.S., Singapore, the Netherlands, Germany, the UK, France, Brazil and Japan. The major export varieties include the Japanese mint oil (derived from *Mentha arvensis*), peppermint oil (*Mentha pipertia*), de-mentholized Japanese mint oil, spearmint (*Mentha spicata*), water mint oil (*Mentha aquatica*), horsemint oil (*Mentha sylvestries*), and Bergemont oil (*Mentha citrate*). India has produced 29,000 tonnes mentha oil in 2015-16 and opening stock was guessed at 15,000 with total seasonal availability at 44,000 tonnes.



The global demand for mentha oil can be attributed to the increased usage of mentha oils owing to the high demand for fragrances in personal care products such as cosmetics, oral care, pharmaceuticals, cigarettes, and flavoring segments. The growing consumer preference for natural and organic personal care products due to increasing awareness regarding the potential side effects of inorganic products is expected to further fuel the growth of this market.



The increasing demand for natural and organic personal care products is a key growth driver for the mentha oil market. The popularity of organic and natural products has increased due to rising awareness of adverse effects of chemical-based products and the health benefits of using organic products. Organic and natural personal care products are made using natural ingredients, which includes mentha oil because of its characteristics of being a denaturant, flavoring agent, and fragrance ingredient.



Machinery Photographs



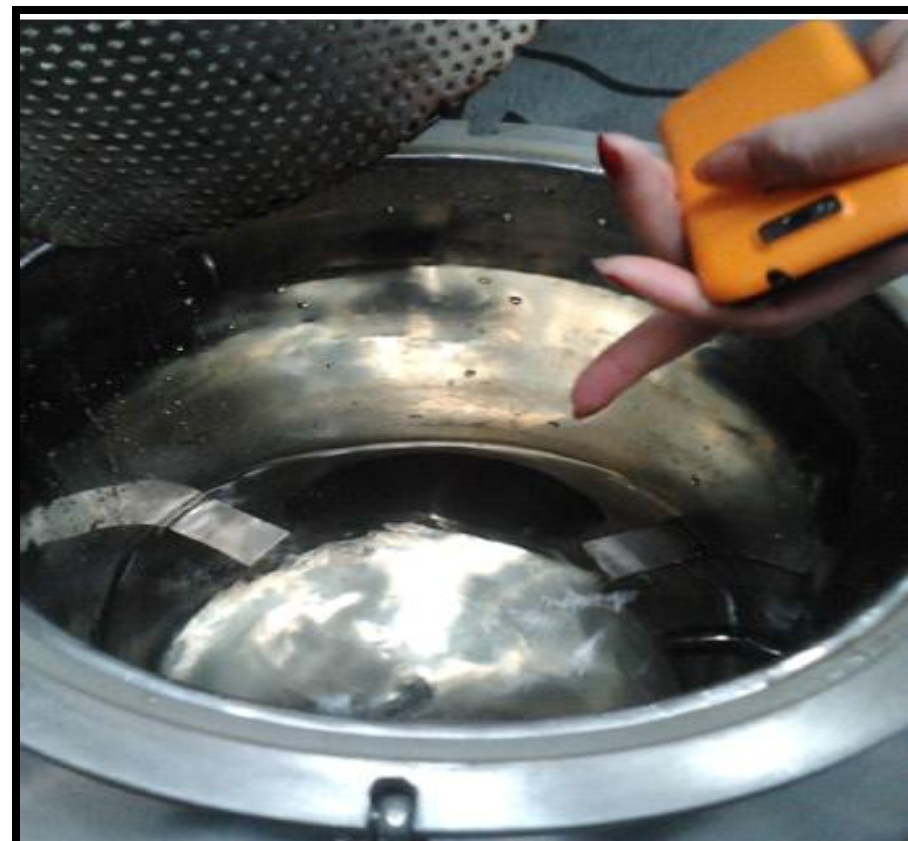
EC100 essential oil distillation unit



control panel



Distillation basket



distillation tank inside

Project at a Glance

| PROJECT AT A GLANCE | | | | (Rs. in lacs) | | | |
|---------------------------------|-------------|---------------|---------------|-----------------------------|-------------|---------------|---------------|
| COST OF PROJECT | | | | MEANS OF FINANCE | | | |
| Particulars | Existing | Proposed | Total | Particulars | Existing | Proposed | Total |
| Land & Site Development Exp. | 0.00 | 65.00 | 65.00 | Capital | 0.00 | 118.21 | 118.21 |
| Buildings | 0.00 | 140.40 | 140.40 | Share Premium | 0.00 | 0.00 | 0.00 |
| Plant & Machineries | 0.00 | 137.41 | 137.41 | Other Type Share | 0.00 | 0.00 | 0.00 |
| Motor Vehicles | 0.00 | 8.00 | 8.00 | Capital | 0.00 | 0.00 | 0.00 |
| Office Automation Equipments | 0.00 | 24.50 | 24.50 | Reserves & Surplus | 0.00 | 0.00 | 0.00 |
| Technical Knowhow Fees & Exp. | 0.00 | 15.00 | 15.00 | Cash Subsidy | 0.00 | 0.00 | 0.00 |
| Franchise & Other Deposits | 0.00 | 0.00 | 0.00 | Internal Cash Accruals | 0.00 | 0.00 | 0.00 |
| Preliminary & Pre-operative Exp | 0.00 | 2.00 | 2.00 | Long/Medium Term Borrowings | 0.00 | 354.64 | 354.64 |
| Provision for Contingencies | 0.00 | 14.00 | 14.00 | Debentures / Bonds | 0.00 | 0.00 | 0.00 |
| Margin Money - Working Capital | 0.00 | 66.55 | 66.55 | Unsecured Loans/Deposits | 0.00 | 0.00 | 0.00 |
| TOTAL | 0.00 | 472.86 | 472.86 | TOTAL | 0.00 | 472.86 | 472.86 |

Project at a Glance

| Year | Annualised | | Book Value | Debt | Dividend | Retained Earnings | | Payout | Probable Market Price | P/E Ratio | Yield Price/Book Value |
|------|------------|-------|------------|-------|----------|-------------------|-----------|--------|-----------------------|--------------|------------------------|
| | EPS | CEPS | | | | Per Share | Per Share | | | | |
| | Rs | Rs | Rs | Rs | Rs | % | Rs | % | Rs | No. of Times | % |
| 1-2 | 5.58 | 9.10 | 15.58 | 24.00 | 0.00 | 100.00 | 5.58 | 0.00 | 5.58 | 1.00 | 0.00 |
| 2-3 | 8.41 | 11.49 | 23.99 | 18.00 | 0.00 | 100.00 | 8.41 | 0.00 | 8.41 | 1.00 | 0.00 |
| 3-4 | 11.27 | 13.97 | 35.26 | 12.00 | 0.00 | 100.00 | 11.27 | 0.00 | 11.27 | 1.00 | 0.00 |
| 4-5 | 14.04 | 16.41 | 49.30 | 6.00 | 0.00 | 100.00 | 14.04 | 0.00 | 14.04 | 1.00 | 0.00 |
| 5-6 | 16.71 | 18.80 | 66.01 | 0.00 | 0.00 | 100.00 | 16.71 | 0.00 | 16.71 | 1.00 | 0.00 |

Project at a Glance

| Year | D. S. C. R. | | | Debt / Equity - Deposits Debt | Equity as-Equity | Total Net Worth | Return on Net Worth | Profitability Ratio | | | | | Assets Turnover Ratio | Current Ratio |
|---------|-------------------|------------|---------|-------------------------------|------------------|-----------------|---------------------|---------------------|-------|--------|------------------|-----------|-----------------------|---------------|
| | Individual | Cumulative | Overall | | | | | GPM | PBT | PAT | Net Contribution | P/V Ratio | | |
| | (Number of times) | | | (Number of times) | | % | % | % | % | % | % | | | |
| Initial | | | | 3.00 | 3.00 | | | | | | | | | |
| 1-2 | 1.33 | 1.33 | | 1.54 | 1.54 | 3.99 | 6.41% | 2.87% | 1.98% | 438.66 | 13.16% | 3.68 | 1.06 | |
| 2-3 | 1.64 | 1.48 | | 0.75 | 0.75 | 2.59 | 7.03% | 3.91% | 2.56% | 511.77 | 13.16% | 3.87 | 1.16 | |
| 3-4 | 2.01 | 1.64 | 2.01 | 0.34 | 0.34 | 1.77 | 7.44% | 4.67% | 3.00% | 584.88 | 13.16% | 3.89 | 1.29 | |
| 4-5 | 2.45 | 1.82 | | 0.12 | 0.12 | 1.27 | 7.73% | 5.22% | 3.32% | 657.99 | 13.16% | 3.81 | 1.43 | |
| 5-6 | 2.98 | 2.01 | | 0.00 | 0.00 | 0.95 | 7.92% | 5.62% | 3.56% | 731.10 | 13.16% | 3.67 | 1.72 | |

Project at a Glance

BEP

| | |
|---|-------------|
| BEP - Maximum Utilisation Year | 5 |
| Cash BEP (% of Installed Capacity) | 53.91% |
| Total BEP (% of Installed Capacity) | 57.28% |
| IRR, PAYBACK and FACR | |
| Internal Rate of Return .. (In %age) | 27.63% |
| Payback Period of the Project is (In Years) | 2.814 Years |
| Fixed Assets Coverage Ratio (No. of times) | 22.439 |

Major Queries/Questions Answered in the Report?

- 1. What is Menthol Crystal & Oil Manufacturing industry ?**
- 2. How has the Menthol Crystal & Oil Manufacturing industry performed so far and how will it perform in the coming years ?**
- 3. What is the Project Feasibility of Menthol Crystal & Oil Manufacturing Plant ?**
- 4. What are the requirements of Working Capital for setting up Menthol Crystal & Oil Manufacturing plant ?**

- 5. What is the structure of the Menthol Crystal & Oil Manufacturing Business and who are the key/major players ?**
- 6. What is the total project cost for setting up Menthol Crystal & Oil Manufacturing Business?**
- 7. What are the operating costs for setting up Menthol Crystal & Oil Manufacturing plant ?**
- 8. What are the machinery and equipment requirements for setting up Menthol Crystal & Oil Manufacturing plant ?**

9. Who are the Suppliers and Manufacturers of Plant & Machinery for setting up Menthol Crystal & Oil Manufacturing plant ?

10. What are the requirements of raw material for setting up Menthol Crystal & Oil Manufacturing plant ?

11. Who are the Suppliers and Manufacturers of Raw materials for setting up Menthol Crystal & Oil Manufacturing Business?

12. What is the Manufacturing Process of Menthol Crystal & Oil?

- 13. What is the total size of land required for setting up Menthol Crystal & Oil Manufacturing plant ?**
- 14. What will be the income and expenditures for Menthol Crystal & Oil Manufacturing Business?**
- 15. What are the Projected Balance Sheets of Menthol Crystal & Oil Manufacturing plant ?**
- 16. What are the requirement of utilities and overheads for setting up Menthol Crystal & Oil Manufacturing plant?**
- 17. What is the Built up Area Requirement and cost for setting up Menthol Crystal & Oil Manufacturing Business?**

18. What are the Personnel (Manpower) Requirements for setting up Menthol Crystal & Oil Manufacturing Business?

19. What are Statistics of Import & Export for Menthol Crystal & Oil?

20. What is the time required to break-even of Menthol Crystal & Oil Manufacturing Business?

21. What is the Break-Even Analysis of Menthol Crystal & Oil Manufacturing plant?

22. What are the Project financials of Menthol Crystal & Oil Manufacturing Business?

- 23. What are the Profitability Ratios of Menthol Crystal & Oil Manufacturing Project?**
- 24. What is the Sensitivity Analysis-Price/Volume of Menthol Crystal & Oil Manufacturing plant?**
- 25. What are the Projected Pay-Back Period and IRR of Menthol Crystal & Oil Manufacturing plant?**
- 26. What is the Process Flow Sheet Diagram of Menthol Crystal & Oil Manufacturing project?**

- 27. What are the Market Opportunities for setting up Menthol Crystal & Oil Manufacturing plant?**
- 28. What is the Market Study and Assessment for setting up Menthol Crystal & Oil Manufacturing Business?**
- 29. What is the Plant Layout for setting up Menthol Crystal & Oil Manufacturing Business?**



Table of Contents of the Project Report

1. PROJECT LOCATION

- 1.1. DISTRICT PROFILE & GEOTECHNICAL SITE CHARACTERIZATION
 - 1.1.1. General
 - 1.1.2. Physical Characteristics
 - 1.1.3. Climate
 - 1.1.4. Map
 - 1.1.5. Economy
 - 1.1.6. Major Industries
 - 1.1.7. Transportation and Communications

2. INTRODUCTION

3. PROPERTIES AND STRUCTURE

4. USES AND APPLICATIONS

5. MARKET SURVEY

6. EXPORT & IMPORT: ALL COUNTRIES

7. FINANCIALS & COMPARISON OF MAJOR INDIAN PLAYERS/COMPANIES

- 7.1. ABOUT FINANCIAL STATEMENTS OF CMIE DATABASE
- 7.2. PROFITS & APPROPRIATIONS
- 7.3. TOTAL LIABILITIES
- 7.4. TOTAL ASSETS
- 7.5. NET CASH FLOW FROM OPERATING ACTIVITIES

- 7.6. SECTION – I
- 7.6.1. Name of Company with Contact Details
- 7.6.2. Name of Director(S)
- 7.6.3. Credit Ratings
- 7.6.4. Plant Capacity
- 7.6.5. Location of Plant
- 7.6.6. Name of Raw Material(S) Consumed With Quantity & Cost
- 7.7. SECTION – II
- 7.7.1. Assets
- 7.7.2. Cash Flow
- 7.7.3. Cost as % Ge of Sales
- 7.7.4. Growth in Assets & Liabilities
- 7.7.5. Growth in Income & Expenditure
- 7.7.6. Income & Expenditure
- 7.7.7. Liabilities
- 7.7.8. Liquidity Ratios
- 7.7.9. Profitability Ratio
- 7.7.10. Profits
- 7.7.11. Return Ratios
- 7.7.12. Structure of Assets & Liabilities (%)
- 7.7.13. Working Capital & Turnover Ratios

8. EXPORT & IMPORT STATISTICS DATA OF INDIA

9. DISTILLATION OF MENTHA OIL

10. MANUFACTURING PROCESS

11. PROCESS FLOW DIAGRAM

12. BUYER'S LIS

13. SUPPLIERS OF RAW MATERIAL

14. UPPLIERS OF PLANT & MACHINERY

15. PHOTOGRAPHS/IMAGES FOR REFERENCE

15.1. PRODUCT PHOTOGRAPHS

15.2. MACHINERY PHOTOGRAPHS

15.3. RAW MATERIAL PHOTOGRAPHS

16. PLANT LAYOUT

17. QUOTATION OF PLANT, MACHINERY AND EQUIPMENTS FROM SUPPLIER

Project Financials

| Project at a Glance | Annexure |
|--|-----------------|
| • Assumptions for Profitability workings | 1 |
| • Plant Economics..... | 2 |
| • Production Schedule..... | 3 |
| • Land & Building..... | 4 |
| Factory Land & Building | |
| Site Development Expenses | |

- **Plant & Machinery.....5**
 - Indigenous Machineries**
 - Other Machineries (Miscellaneous, Laboratory etc.)**

- **Other Fixed Assets.....6**
 - Furniture & Fixtures**
 - Pre-operative and Preliminary Expenses**
 - Technical Knowhow**
 - Provision of Contingencies**

- **Working Capital Requirement Per Month.....7**
 - Raw Material**
 - Packing Material**
 - Lab & ETP Chemical Cost**
 - Consumable Store**

- **Overheads Required Per Month and Per Annum.....8**
Utilities & Overheads (Power, Water and Fuel Expenses etc.)
Royalty and Other Charges
Selling and Distribution Expenses

- **Salary and Wages9**

- **Turnover Per Annum10**

- **Share Capital.....11**
Equity Capital
Preference Share Capital

- **Annexure 1 :: Cost of Project and Means of Finance**
- **Annexure 2 :: Profitability and Net Cash Accruals**
 - **Revenue/Income/Realisation**
 - **Expenses/Cost of Products/Services/Items**
 - **Gross Profit**
 - **Financial Charges**
 - **Total Cost of Sales**
 - **Net Profit After Taxes**
 - **Net Cash Accruals**

• **Annexure 3 :: Assessment of Working Capital requirements**

- **Current Assets**
- **Gross Working Capital**
- **Current Liabilities**
- **Net Working Capital**
- **Working Note for Calculation of Work-in-process**

• **Annexure 4 :: Sources and Disposition of Funds**

- **Annexure 5 :: Projected Balance Sheets**

- **ROI (Average of Fixed Assets)**
- **RONW (Average of Share Capital)**
- **ROI (Average of Total Assets)**

- **Annexure 6 :: Profitability Ratios**

- **D.S.C.R**
- **Earnings Per Share (EPS)**
- **Debt Equity Ratio**

- **Annexure 7 :: Break-Even Analysis**

- **Variable Cost & Expenses**
- **Semi-Variable/Semi-Fixed Expenses**
- **Profit Volume Ratio (PVR)**
- **Fixed Expenses / Cost**
- **B.E.P**

• **Annexure 8 to 11 :: Sensitivity Analysis-Price/Volume**

- **Resultant N.P.B.T**
- **Resultant D.S.C.R**
- **Resultant PV Ratio**
- **Resultant DER**
- **Resultant ROI**
- **Resultant BEP**

- **Annexure 12 :: Shareholding Pattern and Stake Status**

- **Equity Capital**

- **Preference Share Capital**

- **Annexure 13 :: Quantitative Details-Output/Sales/Stocks**

- **Determined Capacity P.A of Products/Services**

- **Achievable Efficiency/Yield % of Products/Services/Items**

- **Net Usable Load/Capacity of Products/Services/Items**

- **Expected Sales/ Revenue/ Income of Products/ Services/ Items**

- **Annexure 14** :: **Product wise Domestic Sales Realisation**
- **Annexure 15** :: **Total Raw Material Cost**
- **Annexure 16** :: **Raw Material Cost per unit**
- **Annexure 17** :: **Total Lab & ETP Chemical Cost**
- **Annexure 18** :: **Consumables, Store etc.**
- **Annexure 19** :: **Packing Material Cost**
- **Annexure 20** :: **Packing Material Cost Per Unit**

- **Annexure 21** :: **Employees Expenses**
- **Annexure 22** :: **Fuel Expenses**
- **Annexure 23** :: **Power/Electricity Expenses**
- **Annexure 24** :: **Royalty & Other Charges**
- **Annexure 25** :: **Repairs & Maintenance Expenses**
- **Annexure 26** :: **Other Manufacturing Expenses**
- **Annexure 27** :: **Administration Expenses**
- **Annexure 28** :: **Selling Expenses**

- **Annexure 29 :: Depreciation Charges – as per Books (Total)**
- **Annexure 30 :: Depreciation Charges – as per Books (P & M)**
- **Annexure 31 :: Depreciation Charges - as per IT Act WDV (Total)**
- **Annexure 32 :: Depreciation Charges - as per IT Act WDV (P & M)**
- **Annexure 33 :: Interest and Repayment - Term Loans**
- **Annexure 34 :: Tax on Profits**
- **Annexure 35 :: Projected Pay-Back Period and IRR**

Reasons for Buying our Report:

- **This report helps you to identify a profitable project for investing or diversifying into by throwing light to crucial areas like industry size, market potential of the product and reasons for investing in the product**
- **This report provides vital information on the product like it's characteristics and segmentation**
- **This report helps you market and place the product correctly by identifying the target customer group of the product**

- **This report helps you understand the viability of the project by disclosing details like machinery required, project costs and snapshot of other project financials**
- **The report provides a glimpse of government regulations applicable on the industry**
- **The report provides forecasts of key parameters which helps to anticipate the industry performance and make sound business decisions**

Our Approach:

- **Our research reports broadly cover Indian markets, present analysis, outlook and forecast for a period of five years.**
- **The market forecasts are developed on the basis of secondary research and are cross-validated through interactions with the industry players**
- **We use reliable sources of information and databases. And information from such sources is processed by us and included in the report**

Scope of the Report

The report titled “Market Survey cum Detailed Techno Economic Feasibility Report on Menthol Crystal & Oil.” provides an insight into Menthol Crystal & Oil market in India with focus on uses and applications, Manufacturing Process, Process Flow Sheets, Plant Layout and Project Financials of Menthol Crystal & Oil project. The report assesses the market sizing and growth of the Indian Menthol Crystal & Oil Industry. While expanding a current business or while venturing into new business, entrepreneurs are often faced with the dilemma of zeroing in on a suitable product/line. And before diversifying/venturing into any product, they wish to study the following aspects of the identified product:

- **Good Present/Future Demand**
- **Export-Import Market Potential**
- **Raw Material & Manpower Availability**
- **Project Costs and Payback Period**

We at NPCCS, through our reliable expertise in the project consultancy and market research field, have demystified the situation by putting forward the emerging business opportunity in the Menthol Crystal & Oil sector in India along with its business prospects. Through this report we have identified Menthol Crystal & Oil project as a lucrative investment avenue.

Tags

Menthol Crystal, Menthol Crystal & Oil Manufacture, Preparation of Menthol Crystals from Mint, Mentha Arvensis, Preparation of Menthol Crystals, Menthol Crystals Manufacturing Project Report, Menthol Crystal, How to Make Menthol Crystals, Menthol Production Process, Menthol Crystal Plant, Menthol Extraction Process, Menthol Crystal Manufacture, Menthol Crystals Manufacturing Plant, Production of Crystal Menthol, Processing of Mentha Oil, Mentha & Menthol Crystal Manufacturing Process, Menthol Crystals Industry, Mentha Oil Production, Production of Mentha Oil, Menthol Oil Extraction Process, Mentha Oil Production Process, Mentha Oil Production Unit, Mentha Oil Extraction Plant, Essential Oil Production Unit, Mentha Oil from Mint Leaves, Report on Mentha Oil Production, Project Report on Menthol Crystal & Oil manufacturing Industry, Detailed Project Report on Menthol Crystal & Oil Production, Project Report on Menthol Oil Manufacturing, Pre-Investment Feasibility Study on Menthol Oil Manufacturing, Techno-Economic feasibility study on Menthol Crystal Production, Feasibility report on Menthol Crystal Production, Free Project Profile on Menthol Crystal & Oil Manufacturing, Project profile on Menthol Oil Manufacturing, Download free project profile on Menthol Crystal Production, Menthol Crystal Making Business, Menthol Crystals Manufacturing Project Report, Most Profitable Essential Oil Extraction Business, manufacture of Menthol Crystals, Project Report on Menthol Bold Crystals, Menthol Crystals and Menthol Oil Manufacturing Industry

**Niir Project Consultancy Services (NPCS)
can provide Detailed Project Report on
Menthol Crystal and Mentha Oil
Manufacturing Industry.**

Minting Money with Mint Oil.

**Extraction of Mentha Oil & Crystal from Mint
Leaves**

See more

<https://goo.gl/bxD89T>

<https://goo.gl/YP33q6>





Visit us at

www.entrepreneurindia.co



www.entrepreneurindia.co

**Take a look at
Niir Project Consultancy Services
on #Street View**

<https://goo.gl/VstWkd>

*Locate us on
Google Maps*

<https://goo.gl/maps/BKkUtq9gevT2>

OUR CLIENTS

Our inexhaustible Client list includes public-sector companies, Corporate Houses, Government undertaking, individual entrepreneurs, NRI, Foreign investors, non-profit organizations and educational institutions from all parts of the World. The list is just a glimpse of our esteemed & satisfied Clients.

Click here to take a look
<https://goo.gl/G3ICjV>

Free Instant Online Project

Identification and Selection Service

Our Team has simplified the process for you by providing a "Free Instant Online Project Identification & Selection" search facility to identify projects based on multiple search parameters related to project costs namely: Plant & Machinery Cost, Total Capital Investment, Cost of the project, Rate of Return% (ROR) and Break Even Point % (BEP). You can sort the projects on the basis of mentioned pointers and identify a suitable project matching your investment requisites.....[Read more](#)

Download Complete List of Project

Reports:

▪ Detailed Project Reports

NPCS is manned by engineers, planners, specialists, financial experts, economic analysts and design specialists with extensive experience in the related industries.

Our Market Survey cum Detailed Techno Economic Feasibility Report provides an insight of market in India. The report assesses the market sizing and growth of the Industry. While expanding a current business or while venturing into new business, entrepreneurs are often faced with the dilemma of zeroing in on a suitable product/line.



And before diversifying/venturing into any product, they wish to study the following aspects of the identified product:

- **Good Present/Future Demand**
- **Export-Import Market Potential**
- **Raw Material & Manpower Availability**
- **Project Costs and Payback Period**

The detailed project report covers all aspect of business, from analyzing the market, confirming availability of various necessities such as Manufacturing Plant, Detailed Project Report, Profile, Business Plan, Industry Trends, Market Research, Survey, Manufacturing Process, Machinery, Raw Materials, Feasibility Study, Investment Opportunities, Cost and Revenue, Plant Economics, Production Schedule,

Working Capital Requirement, uses and applications, Plant Layout, Project Financials, Process Flow Sheet, Cost of Project, Projected Balance Sheets, Profitability Ratios, Break Even Analysis. The DPR (Detailed Project Report) is formulated by highly accomplished and experienced consultants and the market research and analysis are supported by a panel of experts and digitalized data bank.

We at NPCS, through our reliable expertise in the project consultancy and market research field, have demystified the situation by putting forward the emerging business opportunity in India along with its business prospects.....[Read more](#)



Contact us

NIIR PROJECT CONSULTANCY SERVICES

106-E, Kamla Nagar, Opp. Spark Mall,
New Delhi-110007, India.

Email: npcs.ei@gmail.com , info@entrepreneurindia.co

Tel: +91-11-23843955, 23845654, 23845886, 8800733955

Mobile: +91-9811043595

Fax: +91-11-23845886

Website : www.entrepreneurindia.co , www.niir.org

Take a look at NIIR PROJECT CONSULTANCY SERVICES on #StreetView

<https://goo.gl/VstWkd>





Niir PROJECT CONSULTANCY SERVICES

An ISO 9001:2015 Company



www.entrepreneurindia.co

Who are we?

- *One of the leading reliable names in industrial world for providing the most comprehensive technical consulting services*
- *We adopt a systematic approach to provide the strong fundamental support needed for the effective delivery of services to our Clients' in India & abroad*

We at NPCS want to grow with you by providing solutions scale to suit your new operations and help you reduce risk and give a high return on application investments. We have successfully achieved top-notch quality standards with a high level of customer appreciation resulting in long lasting relation and large amount of referral work through technological breakthrough and innovative concepts. A large number of our Indian, Overseas and NRI Clients have appreciated our expertise for excellence which speaks volumes about our commitment and dedication to every client's success.



We bring deep, functional expertise, but are known for our holistic perspective: we capture value across boundaries and between the silos of any organization. We have proven a multiplier effect from optimizing the sum of the parts, not just the individual pieces. We actively encourage a culture of innovation, which facilitates the development of new technologies and ensures a high quality product.



What do we offer?

- *Project Identification*
- *Detailed Project Reports/Pre-feasibility Reports*
- *Market Research Reports*
- *Business Plan*
- *Technology Books and Directory*
- *Industry Trend*
- *Databases on CD-ROM*
- *Laboratory Testing Services*
- *Turnkey Project Consultancy/Solutions*
- *Entrepreneur India (An Industrial Monthly Journal)*

How are we different ?

- *We have two decades long experience in project consultancy and market research field*
- *We empower our customers with the prerequisite know-how to take sound business decisions*
- *We help catalyze business growth by providing distinctive and profound market analysis*
- *We serve a wide array of customers , from individual entrepreneurs to Corporations and Foreign Investors*
- *We use authentic & reliable sources to ensure business precision*

Our Approach

Requirement collection

Thorough analysis of the project

Economic feasibility study of the Project

Market potential survey/research

Report Compilation

Contact us

NIIR PROJECT CONSULTANCY SERVICES

106-E, Kamla Nagar, Opp. Spark Mall,
New Delhi-110007, India.

Email: npcs.ei@gmail.com , info@entrepreneurindia.co

Tel: +91-11-23843955, 23845654, 23845886, 8800733955

Mobile: +91-9811043595

Fax: +91-11-23845886

Website : www.entrepreneurindia.co , www.niir.org

Take a look at NIIR PROJECT CONSULTANCY SERVICES on #StreetView

<https://goo.gl/VstWkd>



Follow us



➤ <https://www.linkedin.com/company/niir-project-consultancy-services>



➤ <https://www.facebook.com/NIIR.ORG>



➤ <https://www.youtube.com/user/NIIRproject>



➤ <https://plus.google.com/+EntrepreneurIndiaNewDelhi>



➤ https://twitter.com/npcs_in



➤ <https://www.pinterest.com/npcsindia/>





For more information, visit us at:

www.niir.org

www.entrepreneurindia.co



www.entrepreneurindia.co