

Railway Sleepers Manufacturing Industry.

**Precast RCC Sleeper Production
for Railway Track.**

**Reinforced Cement Concrete
(RCC) Sleepers**

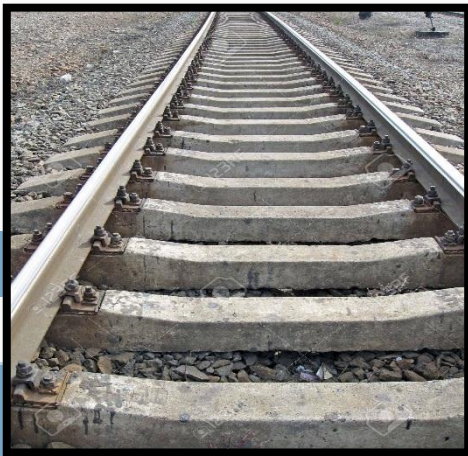
Introduction

PSC sleeper refers to steel reinforced concrete sleeper, commonly used on railway tracks. Besides Indian Railways, power plants, refineries and cement plants also use sleepers for their rail tracks. Concrete sleeper have several advantages over wooden sleepers as it does not rot like timber sleepers and its weight adds stability to the tracks, particularly with changes in temperature. It can also withstand fire hazards and has longer life than wooden sleepers.



Concrete sleepers are generally made from cast concrete slabs reinforced internally by steel wire. Pre-stressed concrete sleepers can also boast a generally superior load capacity and a smoother ride as a result of their greater weight and vertical / lateral stability.

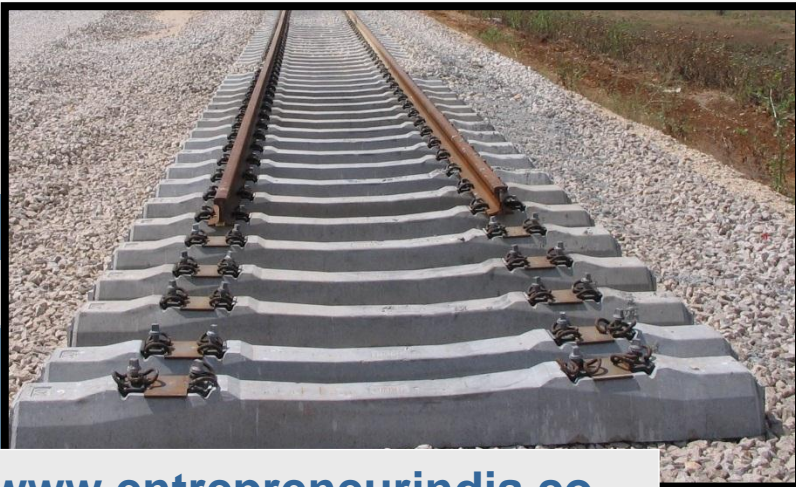
Pre-stressed concrete sleepers can also boast a generally superior load capacity and a smoother ride as a result of their greater weight and vertical / lateral stability. For the most modern high-speed lines, concrete (or composite plastic) becomes a necessity to bear higher speeds.



At present India has the second largest railway network in Asia and the fourth largest in the world after the USA (2, 27,736 km), Russia (2, 22,293 km), and China (87,157 km).

Indian Railway provides the most important mode of public transport in India. This is the most commonly used and cost effective long distance transport system of the country.

The railway network is also ideal for long-distance travel and movement of bulk commodities, apart from being an energy efficient and economic mode of conveyance and transport.



The Government of India has focused on investing on railway infrastructure by making investor-friendly policies. It has moved quickly to enable Foreign Direct Investment (FDI) in railways to improve infrastructure for freight and high-speed trains. At present, several domestic and foreign companies are also looking to invest in Indian rail projects.

Today, Indian Railways manages the fourth-largest rail network in the world, with tracks spanning more than 120,000km of the country. It has played a vital role in the economic, industrial and social development of the country. The network runs multi-gauge operations extending over 63,273 route kilometres.

Indian Railways' revenues increased at a CAGR of 9.66 per cent during FY07-FY18 to US\$ 27.71 billion in FY18. Earnings from the passenger business grew at a CAGR of 9.90 per cent during FY07-FY18 to reach US\$ 7.55 billion in 2017-18P. Freight revenue rose at a CAGR of 9.83 per cent during FY07-FY18 to reach US\$ 18.16 billion in 2017-18.

The structure and the design for concrete sleepers had been constantly undergoing changes in conjunction with the R&D of Indian Railways to suit the changing requirements, environment or otherwise.

Indian Railways has plans to go for higher axle loads in coming years and the new design for concrete sleepers will suit future requirements of the railways.

List of the Concrete Sleeper Plants

Name of the Sleeper Plant	Location	State	Approx. Cement requirement(MT)
<u>1.CENTRAL RAILWAY</u>			
Alpine Housing Development Corpn. Ltd.	Wadi	Karnataka	44932
BEMCO Sleepers Pvt. Ltd.	Khandwa	Mahdya Pradesh	
BEMCO Sleepers Pvt. Ltd.	Nandgaon	Maharashtra	
Concrete India	Lonavla	Maharashtra	
Daya Engineering Works (Poles)	Daund	Maharashtra	
Kaprecon Sleepers Works Pvt. Ltd.	Butibori	Maharashtra	
Malu Sleepers (Maharashtra) Pvt. Ltd.	Daund	Maharashtra	
Prestress (India) Pvt. Ltd.	Mohol	Maharashtra	
Stresscrete Pvt. Ltd.	Manmad	Maharashtra	
<u>2.EASTERN RAILWAY</u>			
MUVA Industries (P) Ltd.	Jagdispur	Jharkhand	37540
Prestressed Udyog (India) Pvt. Ltd.	Chotta Ambona	Jharkhand	
Stresscon Industries Ltd.	Chammagram	West Bengal	
Rampurhat PSC Sleepers Ltd.	Rampurhat	West Bengal	
Tantia Concrete Products (P) Ltd.	Pannagarh	West Bengal	
<u>3.EAST CENTRAL RAILWAY</u>			
Daya Engg. Works Ltd.	Manpur (Gaya)	Bihar	36451
Daya Engineering Works (Sleeper) Ltd.	Manpur(Gaya)	Bihar	
Natraj Engg. Pvt. Ltd.	Sarai	Bihar	
<u>4.EAST COAST RAILWAY</u>			
Gannon Dunkerley & Co. Ltd.	Rayagada	Orissa	40456
Mazda Concrete Products Ltd.	Kaipadar Road	Orissa	
Calcutta Springs Ltd.	Surlaroad	Orissa	
Sahuwala Cylinders Ltd.	Garudaballi	Andhra Pradesh	
Vijay Prestressed Products (P) Ltd.	Pendurthi	Andhra Pradesh	
<u>5.NORTHERN RAILWAY</u>			
Khem Chand	Lohta	Uttar Pradesh	90316
Track Innovations(India) Pvt. Ltd.	Chandigarh	UT of Chandigarh	
Veekay Industries	Veerbhadra	Uttranachal	
Ashi Pvt. Ltd.	Rewari	Haryana	

Jay Prestressed Products Ltd.	Kosikalan	Uttar Pradesh	
Departmental Concrete sleeper Plant	Khalispur	Uttar Pradesh	
Vishal Nirmithi	Kandrori	Himachal Pradesh	
Icon Sleepers	Solakha	Haryana	
Tayal & Co.	Gohana	Haryana	
<u>6.NORTH CENTRAL RAILWAY</u>			
ECON Antri Ltd.	Antri	Madhya Pradesh	
Engipress Industries Ltd	Banmore	Madhya Pradesh	41547
Indian Hume Pipe Co. Ltd.	Karari	Uttar Pradesh	
Departmental Concrete Sleeper Plant	Subedarganj	Uttar Pradesh	
<u>7.NORTH WESTERN RAILWAY</u>			
Arvind Construction Co. Ltd.	Marwar Chapri	Rajasthan	
Daya Engineering Works (Sleeper) Ltd.	Degana	Rajasthan	65291
Rural Engg. Co. Pvt. Ltd.	Shambhupura	Rajasthan	
CSP	Badi Khatu	Rajasthan	
CSP	Hanumangarh	Rajasthan	
CSP	churu	Rajasthan	
<u>8.NORTH EASTERN RAILWAY</u>			
Annavamam Concrete Pvt. Ltd.	Burhwal	Uttar Pradesh	
Calstar Steel Ltd.	Kanpur Anwarganj	Uttar Pradesh	49373
CCI Prestress Ties (P) Ltd.	Lalkuan	Uttaranchal	
Bridge Workshop (Departmental)	Gorakhpur Cantt	Uttar Pradesh	
<u>9.NORTH EAST FRONTIER RAILWAY</u>			
Allied Engg. Enterprises	Lunding	Assam	
Arunoday Const. Co. (P) Ltd.	Jagi Road	Assam	53254
Daya Engg. Works	Mirza	Assam	
PCM Cement Concrete Pvt. Ltd.	New Jalpaiguri	West Bengal	
Prestressed Udyog (Assam) Pvt. Ltd.	New Bongaigaon	Assam	
Rail Track Concrete Products Pvt. Ltd.	Bihara	Assam	
<u>10.SOUTHERN RAILWAY</u>			
Concrete Products & Const. Co.	Tiruvalam	Tamil Nadu	
Concrete Products & Construction Co.	Ambattur	Tamil Nadu	72116
Kottukulam Engineers Pvt. Ltd.	Bommidi	Tamil Nadu	
Nallai Concrete Products & Const. Co.	Gangaikondan	Tamil Nadu	
Rayalseema Concrete Sleepers (P) Ltd.	Thirumanglam	Tamil Nadu	

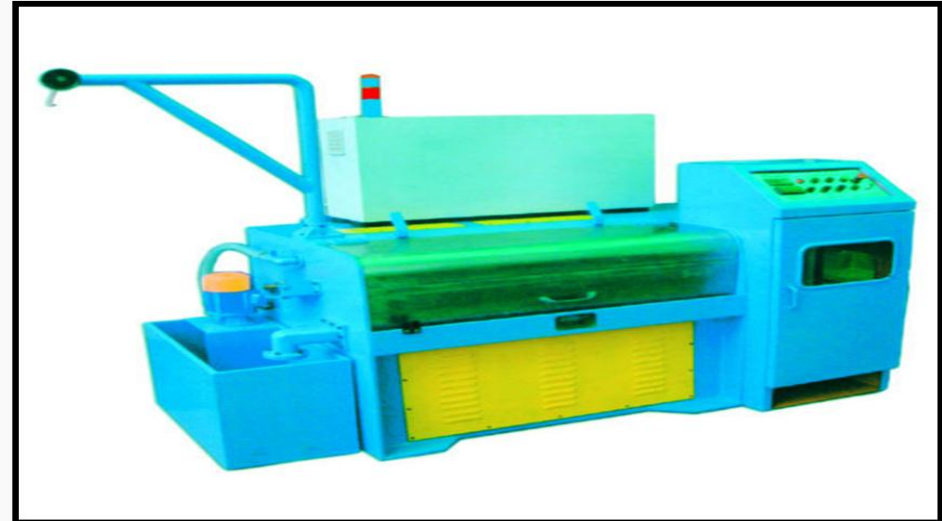
<u>11.SOUTH WESTERN RAILWAY</u>			
Mahadev Industries	Hospet	Karnataka	47970
Malu Sleepers Pvt. Ltd.	Birur Jn.	Karnataka	
Shri Maruthi Builders	Yashwantpur	Karnataka	
CSP	Hubli	Karnataka	
CSP	Devengere	Karnataka	
CSP	Tumkur	Karnataka	
<u>12.SOUTH CENTRAL RAILWAY</u>			
Coromandel Concrete Products Ltd.	Kovvur	Andhra Pradesh	75675
Lakshmi Prestress Concrete Works	Hasanparthi	Andhra Pradesh	
Mysore Structural Ltd.	Wadiyaram	Andhra Pradesh	
Raghavendra Prestress Products Pvt. Ltd.	Mantralyam Road	Andhra Pradesh	
Rayalseema Concrete Sleepers (P) Ltd.	Narayanpet Road	Andhra Pradesh	
SRECO Engineers Pvt. Ltd.	Shankarapalli	Andhra Pradesh	
The Concrete Products & Const. Co.	Kondapalli	Andhra Pradesh	
V.S. Engineering Pvt. Ltd.	Nallapadu	Andhra Pradesh	
Raghvendra Rail lines Pvt. Ltd.	Kondapuram	Andhra Pradesh	
CSP	Yellakaru	Andhra Pradesh	
<u>13.SOUTH EASTERN RAILWAY</u>			
Daya Concretes Ltd.	Dalbhungarh	Jharkhand	26698
DEW Conc. Ties Limited	Dalbhungarh	Jharkhand	
ISCO Track Sleeper Pvt. Ltd.	Anara	West Bengal	
Nilgiri Sleepers Ltd.	Balasore	Orissa	
OCP India Pvt. Ltd.	Jharsuguda	Orissa	
Prestressed Udyog (India) Pvt. Ltd.	Chandil	Jharkhand	
<u>14.SOUTH EAST CENTRAL RAILWAY</u>			
Orissa Concrete & Allied Industries	Kapa	Chhatisgarh	23249
Orissa Concrete & Allied Industries	Bhanpuri	Chhatisgarh	
Rayalseema Concrete Sleepers (P) Ltd.	Kargi Road	Chhatisgarh	
Univabs Sleepers Pvt. Ltd.	Dongargarh	Chhatisgarh	
<u>15.WESTERN RAILWAY</u>			
Manibhai Bros (Sleepers)	Kharsalia	Gujarat	49361
S. Subrahmanyam & Co.	Kharsalia	Gujarat	
Tankrete India Ltd.	Udvada	Gujarat	
Usha Prestressed Sleeper Udyog(Piplod)	Godhra	Gujarat	
Vaman Prestressing Co. Ltd.	Digsar	Gujarat	

<u>16.WEST CENTRAL RAILWAY</u>			
Marathwada Prestress Pvt. Ltd.	Bankhedi	Madhya Pradesh	45771
Shree Kesharia Concrete Products (P) Ltd.	Bareth	Madhya Pradesh	
Donypolo Udyog Pvt. Ltd.	Shamgarh	Madhya Pradesh	
Total Approx. requirement of all Concrete Sleeper Plants.			8,00,000 MT

Machinery Photographs



Wire Cutting Machine



Wire Drawing Machine



Vibrating Table



Boiler



Fuel Storage Tank



Air Compressor

Project at a Glance

PROJECT AT A GLANCE				(` in lacs)			
COST OF PROJECT				MEANS OF FINANCE			
Particulars	Existing	Proposed	Total	Particulars	Existing	Proposed	Total
Land & Site Development Exp.	0.00	50.00	50.00	Capital	0.00	492.41	492.41
Buildings	0.00	126.60	126.60	Share Premium	0.00	0.00	0.00
Plant & Machineries	0.00	1508.67	1508.67	Other Type Share			
Motor Vehicles	0.00	10.00	10.00	Capital	0.00	0.00	0.00
Office Automation Equipments	0.00	78.00	78.00	Reserves & Surplus	0.00	0.00	0.00
Technical Knowhow Fees & Exp.	0.00	15.00	15.00	Cash Subsidy	0.00	0.00	0.00
Franchise & Other Deposits	0.00	0.00	0.00	Internal Cash Accruals	0.00	0.00	0.00
Preliminary & Pre-operative Exp	0.00	2.00	2.00	Long/Medium Term Borrowings	0.00	1477.22	1477.22
Provision for Contingencies	0.00	130.00	130.00	Debentures / Bonds	0.00	0.00	0.00
Margin Money - Working Capital	0.00	49.36	49.36	Unsecured Loans/Deposits	0.00	0.00	0.00
TOTAL	0.00	1969.63	1969.63	TOTAL	0.00	1969.63	1969.63



Project at a Glance

Year	Annualised		Book Value	Debt	Dividend	Retained Earnings		Payout	Probable Market Price	P/E Ratio	Yield Price/Book Value
	EPS	CEPS	Per Share		Per Share	Per Share		%		No.of Times	%
1-2	4.95	10.42	14.95	24.00	0.00	100.00	4.95	0.00	4.95	1.00	0.00
2-3	7.25	11.92	22.21	18.00	0.00	100.00	7.25	0.00	7.25	1.00	0.00
3-4	9.60	13.59	31.81	12.00	0.00	100.00	9.60	0.00	9.60	1.00	0.00
4-5	11.95	15.36	43.76	6.00	0.00	100.00	11.95	0.00	11.95	1.00	0.00
5-6	14.28	17.20	58.04	0.00	0.00	100.00	14.28	0.00	14.28	1.00	0.00



Project at a Glance

Year	D. S. C. R.			Debt / - Depos its Debt	Equity as- Equity	Total Net Wort h	Retur n on Net Worth	Profitability Ratio					Assets Turnov er Ratio	Curre nt Ratio
	Individ ual	Cumulat ive	Overa ll					GPM	PBT	PAT	Net Contri bution	P/V Ratio		
	(Number of times)			(Number of times)		%	%	%	%	%	%			
Initial				3.00	3.00									
1-2	1.47	1.47		1.60	1.60	1.95		19.14 %	11.22%	9.41%	1084. 41	41.84 %	1.20	0.95
2-3	1.69	1.58		0.81	0.81	1.08		22.61 %	16.79%	11.81 %	1264. 97	41.83 %	1.34	1.44
3-4	1.96	1.69	1.98	0.38	0.38	0.59		24.96 %	20.74%	13.68 %	1445. 67	41.83 %	1.39	2.00
4-5	2.31	1.83		0.14	0.14	0.31		26.59 %	23.61%	15.14 %	1626. 38	41.83 %	1.38	2.63
5-6	2.74	1.98		0.00	0.00	0.15		27.72 %	25.72%	16.28 %	1807. 08	41.83 %	1.32	5.62



Project at a Glance

BEP

BEP - Maximum Utilisation Year	5
Cash BEP (% of Installed Capacity)	30.55%
Total BEP (% of Installed Capacity)	38.51%
IRR, PAYBACK and FACR	
Internal Rate of Return .. (In %age)	26.27%
Payback Period of the Project is (In Years)	2 Years 3 Months
Fixed Assets Coverage Ratio (No. of times)	4.422



Major Queries/Questions Answered in the Report?

- 1. What is Precast RCC Railway Sleepers Manufacturing industry ?**
- 2. How has the Precast RCC Railway Sleepers Manufacturing industry performed so far and how will it perform in the coming years ?**
- 3. What is the Project Feasibility of Precast RCC Railway Sleepers Manufacturing Plant ?**
- 4. What are the requirements of Working Capital for setting up Precast RCC Railway Sleepers Manufacturing plant ?**

- 5. What is the structure of the Precast RCC Railway Sleepers Manufacturing Business and who are the key/major players ?**
- 6. What is the total project cost for setting up Precast RCC Railway Sleepers Manufacturing plant ?**
- 7. What are the operating costs for setting up Precast RCC Railway Sleepers Manufacturing plant ?**
- 8. What are the machinery and equipment requirements for setting up Precast RCC Railway Sleepers Manufacturing Business ?**

9. Who are the Suppliers and Manufacturers of Plant & Machinery for setting up Precast RCC Railway Sleepers Manufacturing plant ?

10. What are the requirements of raw material for setting up Precast RCC Railway Sleepers Manufacturing Business?

11. Who are the Suppliers and Manufacturers of Raw materials for setting up Precast RCC Railway Sleepers Manufacturing plant ?

12. What is the Manufacturing Process of Precast RCC Railway Sleepers ?

- 13. What is the total size of land required for setting up Precast RCC Railway Sleepers Manufacturing plant ?**
- 14. What will be the income and expenditures for Precast RCC Railway Sleepers Manufacturing plant ?**
- 15. What are the Projected Balance Sheets of Precast RCC Railway Sleepers Manufacturing Business ?**
- 16. What are the requirement of utilities and overheads for setting up Precast RCC Railway Sleepers Manufacturing plant?**
- 17. What is the Built up Area Requirement and cost for setting up Precast RCC Railway Sleepers Manufacturing Business?**

- 18. What are the Personnel (Manpower) Requirements for setting up Precast RCC Railway Sleepers Manufacturing Business?**
- 19. What is the Plant Layout for setting up Precast RCC Railway Sleepers Manufacturing Business?**
- 20. What is the time required to break-even of Precast RCC Railway Sleepers Manufacturing Business?**
- 21. What is the Break-Even Analysis of Precast RCC Railway Sleepers Manufacturing plant?**
- 22. What are the Project financials of Precast RCC Railway Sleepers Manufacturing plant?**

- 23. What are the Profitability Ratios of Precast RCC Railway Sleepers Manufacturing plant?**
- 24. What is the Sensitivity Analysis-Price/Volume of Precast RCC Railway Sleepers Manufacturing plant?**
- 25. What are the Projected Pay-Back Period and IRR of Precast RCC Railway Sleepers Manufacturing Business?**
- 26. What is the Process Flow Sheet Diagram of Precast RCC Railway Sleepers Manufacturing project?**

27. What are the Market Opportunities for setting up Precast RCC Railway Sleepers Manufacturing plant?

28. What is the Market Study and Assessment for setting up Precast RCC Railway Sleepers Manufacturing plant?

Table of Contents of the Project Report

1. PROJECT LOCATION

- 1.1. UDHAM SINGH NAGAR: DISTRICT PROFILE & GEOTECHNICAL SITE CHARACTERIZATION
 - 1.1.1. General
 - 1.1.2. Location & Geographical Area
 - 1.1.3. Transportation
 - 1.1.4. Demographics
 - 1.1.5. Map
 - 1.1.6. Availability of Minerals
 - 1.1.7. Economy

2. INTRODUCTION

3. ELEMENTS OF PAVEMENT

- 3.1. RAIL
- 3.2. FASTENING
- 3.3. SLEEPERS
- 3.4. BALLAST

4. B.I.S. SPECIFICATIONS

- 4.1. IS 12269 (1987): 53 GRADE ORDINARY PORTLAND CEMENT [CED 2: CEMENT AND CONCRETE]
- 4.2. IS 13282 (1991): MINE HAULAGE TRACKS - TRACK SLEEPERS - GENERAL REQUIREMENTS [MED 8: MINING TECHNIQUES AND EQUIPMENT]

5. MARKET SURVEY

- 5.1. INDIAN RAILWAYS HAS TWO MAJOR SEGMENTS
- 5.2. EVOLUTION OF RAILWAYS IN INDIA
- 5.3. STRONG REVENUE GROWTH FOR INDIAN RAILWAYS
- 5.4. PASSENGER VOLUMES WITNESS HEALTHY GROWTH
- 5.5. GROWING NUMBER OF METRO PROJECTS IN INDIA

6. EXPORT & IMPORT: ALL COUNTRIES

- 6.1. EXPORT: ALL COUNTRIES
- 6.2. IMPORT: ALL COUNTRIES

7. FINANCIALS & COMPARISON OF MAJOR INDIAN PLAYERS/COMPANIES

- 7.1. ABOUT FINANCIAL STATEMENTS OF CMIE DATABASE
- 7.2. PROFITS & APPROPRIATIONS
- 7.3. TOTAL LIABILITIES
- 7.4. TOTAL ASSETS
- 7.5. NET CASH FLOW FROM OPERATING ACTIVITIES
- 7.6. SECTION – I
 - 7.6.1. Name of Company with Contact Details
 - 7.6.2. Name of Director(S)
 - 7.6.3. Plant Capacity
 - 7.6.4. Location of Plant
 - 7.6.5. Name of Raw Material (S) Consumed with Quantity & Cost
- 7.7. SECTION – II
 - 7.7.1. Assets
 - 7.7.2. Cash Flow
 - 7.7.3. Cost as % ge of Sales
 - 7.7.4. Growth in Assets & Liabilities
 - 7.7.5. Growth in Income & Expenditure
 - 7.7.6. Liabilities

- 7.7.7. Profits
- 7.7.8. Return Ratios
- 7.7.9. Structure of Assets & Liabilities (%)
- 7.7.10. Working Capital & Turnover Ratios

8. EXPORT STATISTICS DATA OF INDIA

- 8.1. EXPORT STATISTICS DATA FOR RAILWAY SLEEPER
- 8.2. IMPORT STATISTICS DATA FOR RAILWAY SLEEPER

9. PRESENT MANUFACTURERS

10. TYPES OF SLEEPERS

- 10.1. WOODEN SLEEPERS
- 10.2. STEEL SLEEPERS
- 10.3. CAST IRON RAILWAY SLEEPERS
- 10.4. CONCRETE RAILWAY SLEEPERS

11. DIFFERENT TYPES OF CONCRETE SLEEPERS BEING MANUFACTURED BY INDIAN RAILWAYS

- 11.1. MONO-BLOCK PRESTRESSED CONCRETE SLEEPERS WITH PANDROL CLIPS
- 11.2. PCS-12 AND PCS-14
- 11.3. MONO-BLOCK POST-TENSION TYPE OF CONCRETE SLEEPERS FOR BG
- 11.4. MONO-BLOCK PRC SLEEPERS FOR MG (PCS-17)
- 11.5. TWO-BLOCK RCC SLEEPER FOR BG YARDS
- 11.6. TWO-BLOCK CONCRETE SLEEPER FOR MG YARDS
- 11.7. MONO-BLOCK VERSUS TWIN-BLOCK CONCRETE SLEEPERS

12. RAILWAY TRACK

- 12.1. TRACK STRUCTURE
- 12.2. BALLAST LESS TRACK
- 12.3. LADDER TRACK

13. R.C.C. SLEEPERS

14. PROCESS OF RCC SLEEPERS

- 14.1. PRE-STRESSED CONCRETE RAILWAY SLEEPERS

15. TYPES OF PRE-STRESSING

- 15.1. SOURCE OF PRESTRESSING FORCE
- 15.2. EXTERNAL OR INTERNAL PRESTRESSING
- 15.3. PRE-TENSIONING OR POST-TENSIONING
- 15.4. LINEAR OR CIRCULAR PRESTRESSING
- 15.5. FULL, LIMITED OR PARTIAL PRESTRESSING
- 15.6. RAILWAY PRESTRESSED CONCRETE SLEEPERS

16. DESIGN CONSIDERATIONS FOR SLEEPERS

- 16.1. STATIC AND DYNAMIC LOAD
- 16.2. BALLAST REACTION

17. TESTS FOR ACCEPTANCE OF SLEEPERS

18. LIST OF RAW MATERIALS

19. MANUFACTURING PROCESS

20. PROCESS FLOW DIAGRAM

21. STRENGTH CHARACTERISATION FOR CONCRETE SLEEPERS

- 21.1. CLAMPING FORCE TEST
- 21.2. LONGITUDINAL RESTRAINT TEST
- 21.3. VERTICAL STIFFNESS TEST
- 21.4. CYCLIC LOADING TEST

22. SCHEDULE FOR CALIBRATION OF VARIOUS GAUGES AND TESTING EQUIPMENTS IN THE CONCRETE SLEEPER PLANT

23. SUPPLIERS OF PLANT & MACHINERY

24. SUPPLIERS OF RAW MATERIAL

25. PHOTOGRAPHS/IMAGES FOR REFERENCE

- 25.1. MACHINERY PHOTOGRAPHS
- 25.2. RAW MATERIAL PHOTOGRAPHS
- 25.3. PRODUCT PHOTOGRAPHS

26. PLANT LAYOUT

27. QUOTATION OF PLANT, MACHINERY AND EQUIPMENTS FROM SUPPLIER

Project Financials

Project at a Glance	Annexure
• Assumptions for Profitability workings	1
• Plant Economics.....	2
• Production Schedule.....	3
• Land & Building.....	4
Factory Land & Building	
Site Development Expenses	

- **Plant & Machinery.....5**
 - Indigenous Machineries**
 - Other Machineries (Miscellaneous, Laboratory etc.)**

- **Other Fixed Assets.....6**
 - Furniture & Fixtures**
 - Pre-operative and Preliminary Expenses**
 - Technical Knowhow**
 - Provision of Contingencies**

- **Working Capital Requirement Per Month.....7**
 - Raw Material**
 - Packing Material**
 - Lab & ETP Chemical Cost**
 - Consumable Store**

- **Overheads Required Per Month and Per Annum.....8**
Utilities & Overheads (Power, Water and Fuel Expenses etc.)
Royalty and Other Charges
Selling and Distribution Expenses

- **Salary and Wages9**

- **Turnover Per Annum10**

- **Share Capital.....11**
Equity Capital
Preference Share Capital

- **Annexure 1 :: Cost of Project and Means of Finance**
- **Annexure 2 :: Profitability and Net Cash Accruals**
 - **Revenue/Income/Realisation**
 - **Expenses/Cost of Products/Services/Items**
 - **Gross Profit**
 - **Financial Charges**
 - **Total Cost of Sales**
 - **Net Profit After Taxes**
 - **Net Cash Accruals**

• **Annexure 3 :: Assessment of Working Capital requirements**

- **Current Assets**
- **Gross Working Capital**
- **Current Liabilities**
- **Net Working Capital**
- **Working Note for Calculation of Work-in-process**

• **Annexure 4 :: Sources and Disposition of Funds**

- **Annexure 5 :: Projected Balance Sheets**

- **ROI (Average of Fixed Assets)**
- **RONW (Average of Share Capital)**
- **ROI (Average of Total Assets)**

- **Annexure 6 :: Profitability Ratios**

- **D.S.C.R**
- **Earnings Per Share (EPS)**
- **Debt Equity Ratio**

• **Annexure 7 :: Break-Even Analysis**

- **Variable Cost & Expenses**
- **Semi-Variable/Semi-Fixed Expenses**
- **Profit Volume Ratio (PVR)**
- **Fixed Expenses / Cost**
- **B.E.P**

- **Annexure 8 to 11 :: Sensitivity Analysis-Price/Volume**

- **Resultant N.P.B.T**
- **Resultant D.S.C.R**
- **Resultant PV Ratio**
- **Resultant DER**
- **Resultant ROI**
- **Resultant BEP**

- **Annexure 12 :: Shareholding Pattern and Stake Status**

- **Equity Capital**

- **Preference Share Capital**

- **Annexure 13 :: Quantitative Details-Output/Sales/Stocks**

- **Determined Capacity P.A of Products/Services**

- **Achievable Efficiency/Yield % of Products/Services/Items**

- **Net Usable Load/Capacity of Products/Services/Items**

- **Expected Sales/ Revenue/ Income of Products/ Services/ Items**

- **Annexure 14** :: **Product wise Domestic Sales Realisation**
- **Annexure 15** :: **Total Raw Material Cost**
- **Annexure 16** :: **Raw Material Cost per unit**
- **Annexure 17** :: **Total Lab & ETP Chemical Cost**
- **Annexure 18** :: **Consumables, Store etc.**
- **Annexure 19** :: **Packing Material Cost**
- **Annexure 20** :: **Packing Material Cost Per Unit**

- **Annexure 21** :: **Employees Expenses**
- **Annexure 22** :: **Fuel Expenses**
- **Annexure 23** :: **Power/Electricity Expenses**
- **Annexure 24** :: **Royalty & Other Charges**
- **Annexure 25** :: **Repairs & Maintenance Expenses**
- **Annexure 26** :: **Other Manufacturing Expenses**
- **Annexure 27** :: **Administration Expenses**
- **Annexure 28** :: **Selling Expenses**

- **Annexure 29 :: Depreciation Charges – as per Books (Total)**
- **Annexure 30 :: Depreciation Charges – as per Books (P & M)**
- **Annexure 31 :: Depreciation Charges - as per IT Act WDV (Total)**
- **Annexure 32 :: Depreciation Charges - as per IT Act WDV (P & M)**
- **Annexure 33 :: Interest and Repayment - Term Loans**
- **Annexure 34 :: Tax on Profits**
- **Annexure 35 :: Projected Pay-Back Period and IRR**

Reasons for Buying our Report:

- **This report helps you to identify a profitable project for investing or diversifying into by throwing light to crucial areas like industry size, market potential of the product and reasons for investing in the product**
- **This report provides vital information on the product like it's characteristics and segmentation**
- **This report helps you market and place the product correctly by identifying the target customer group of the product**

- **This report helps you understand the viability of the project by disclosing details like machinery required, project costs and snapshot of other project financials**
- **The report provides a glimpse of government regulations applicable on the industry**
- **The report provides forecasts of key parameters which helps to anticipate the industry performance and make sound business decisions**

Our Approach:

- **Our research reports broadly cover Indian markets, present analysis, outlook and forecast for a period of five years.**
- **The market forecasts are developed on the basis of secondary research and are cross-validated through interactions with the industry players**
- **We use reliable sources of information and databases. And information from such sources is processed by us and included in the report**

Scope of the Report

The report titled “Market Survey cum Detailed Techno Economic Feasibility Report on Precast RCC Sleeper.” provides an insight into Precast RCC Sleeper market in India with focus on uses and applications, Manufacturing Process, Process Flow Sheets, Plant Layout and Project Financials of Precast RCC Sleeper project. The report assesses the market sizing and growth of the Indian Precast RCC Sleeper Industry. While expanding a current business or while venturing into new business, entrepreneurs are often faced with the dilemma of zeroing in on a suitable product/line. And before diversifying/venturing into any product, they wish to study the following aspects of the identified product:

- **Good Present/Future Demand**
- **Export-Import Market Potential**
- **Raw Material & Manpower Availability**
- **Project Costs and Payback Period**

We at NPCCS, through our reliable expertise in the project consultancy and market research field, have demystified the situation by putting forward the emerging business opportunity in the Precast RCC Sleeper sector in India along with its business prospects. Through this report we have identified Precast RCC Sleeper project as a lucrative investment avenue.

Tags

Production of Reinforced Cement Concrete Sleepers for Railway Track, Concrete Railway Sleepers Manufacturing Plant, Concrete Sleepers, Concrete Sleeper Production, Manufacture of Prestressed Concrete Railway Sleepers, Pre-Stressed Concrete Sleeper Production, Railway Sleepers Manufacturing Process, Concrete Sleepers Railway, Concrete Railway Sleepers Manufacturing Plant in India, Prestressed Concrete Sleepers, Concrete Railway Sleepers, Prestressed Concrete Sleepers Pdf, Concrete Sleeper Factory, Pre-Stressed Concrete Sleepers, Concrete Railway Sleeper Production, Concrete Sleeper Production Plant, Concrete Sleeper Manufacture, Manufacture of PSC Sleeper, Sleeper Production, Concrete Sleeper Plant, Railway Sleepers Factory, Manufacturing of Pre-Stressed Concrete Sleepers, Production Process of PSC Sleepers, Project Report on Railway Sleepers Manufacturing Industry, Detailed Project Report on Pre-Stressed Concrete Sleeper Production

Project Report on Pre-Stressed Concrete Sleeper Production, Pre-Investment Feasibility Study on Concrete Sleeper Production, Techno-Economic feasibility study on Concrete Sleeper Production, Feasibility report on Pre-Stressed Concrete Sleeper Production, Free Project Profile on Pre-Stressed Concrete Sleeper Production, Project profile on Railway Sleepers Manufacturing, Download free project profile on Concrete Sleeper Production, Production of Concrete Sleepers, Production of Concrete Railway Sleepers, Concrete Sleepers for Railways, Production of Concrete Sleeper in India, Railway Sleepers, Concrete Sleeper Manufacturing Company, Production of Sleepers from Concrete, Railway Sleeper Precast Factory, Sleeper Plant and Production, Production Process of RCC Sleepers, Railway Sleeper Plant, Concrete Sleeper Manufacturing Factory, Manufacture of Concrete Sleepers, Manufacturing Process of RCC Sleepers, RCC Sleeper Manufacturing Factory, Precast Concrete Sleepers Production, Precast Sleeper Production, RCC Sleeper for Railway Track, RCC Sleepers Production, Reinforced Cement Concrete Sleepers Production, Manufacturing Plant of Reinforced Cement Concrete Sleepers, RCC Sleepers Production Project Ideas

**Niir Project Consultancy Services (NPCS)
can provide Detailed Project Report on
Railway Sleepers Manufacturing Industry.
Precast RCC Sleeper Production for
Railway Track.
Reinforced Cement Concrete (RCC)
Sleepers**

See more

<https://goo.gl/v21URV>

<https://goo.gl/DuFL9V>

<https://goo.gl/ETCQqa>



Visit us at

www.entrepreneurindia.co



www.entrepreneurindia.co

**Take a look at
Niir Project Consultancy Services
on #Street View**

<https://goo.gl/VstWkd>

*Locate us on
Google Maps*

<https://goo.gl/maps/BKkUtq9gevT2>

OUR CLIENTS

Our inexhaustible Client list includes public-sector companies, Corporate Houses, Government undertaking, individual entrepreneurs, NRI, Foreign investors, non-profit organizations and educational institutions from all parts of the World. The list is just a glimpse of our esteemed & satisfied Clients.

Click here to take a look
<https://goo.gl/G3ICjV>

Free Instant Online Project

Identification and Selection Service

Our Team has simplified the process for you by providing a "Free Instant Online Project Identification & Selection" search facility to identify projects based on multiple search parameters related to project costs namely: Plant & Machinery Cost, Total Capital Investment, Cost of the project, Rate of Return% (ROR) and Break Even Point % (BEP). You can sort the projects on the basis of mentioned pointers and identify a suitable project matching your investment requisites.....[Read more](#)



Download Complete List of Project

Reports:

▪ Detailed Project Reports

NPCS is manned by engineers, planners, specialists, financial experts, economic analysts and design specialists with extensive experience in the related industries.

Our Market Survey cum Detailed Techno Economic Feasibility Report provides an insight of market in India. The report assesses the market sizing and growth of the Industry. While expanding a current business or while venturing into new business, entrepreneurs are often faced with the dilemma of zeroing in on a suitable product/line.



And before diversifying/venturing into any product, they wish to study the following aspects of the identified product:

- **Good Present/Future Demand**
- **Export-Import Market Potential**
- **Raw Material & Manpower Availability**
- **Project Costs and Payback Period**

The detailed project report covers all aspect of business, from analyzing the market, confirming availability of various necessities such as Manufacturing Plant, Detailed Project Report, Profile, Business Plan, Industry Trends, Market Research, Survey, Manufacturing Process, Machinery, Raw Materials, Feasibility Study, Investment Opportunities, Cost and Revenue, Plant Economics, Production Schedule,



Working Capital Requirement, uses and applications, Plant Layout, Project Financials, Process Flow Sheet, Cost of Project, Projected Balance Sheets, Profitability Ratios, Break Even Analysis. The DPR (Detailed Project Report) is formulated by highly accomplished and experienced consultants and the market research and analysis are supported by a panel of experts and digitalized data bank.

We at NPCS, through our reliable expertise in the project consultancy and market research field, have demystified the situation by putting forward the emerging business opportunity in India along with its business prospects.....[Read more](#)



Contact us

NIIR PROJECT CONSULTANCY SERVICES

106-E, Kamla Nagar, Opp. Spark Mall,

New Delhi-110007, India.

Email: npcs.ei@gmail.com , info@entrepreneurindia.co

Tel: +91-11-23843955, 23845654, 23845886, 8800733955

Mobile: +91-9811043595

Fax: +91-11-23845886

Website : www.entrepreneurindia.co , www.niir.org

Take a look at NIIR PROJECT CONSULTANCY SERVICES on #StreetView

<https://goo.gl/VstWkd>



Niir PROJECT CONSULTANCY SERVICES

An ISO 9001:2015 Company



Who are we?

- *One of the leading reliable names in industrial world for providing the most comprehensive technical consulting services*
- *We adopt a systematic approach to provide the strong fundamental support needed for the effective delivery of services to our Clients' in India & abroad*



We at NPCS want to grow with you by providing solutions scale to suit your new operations and help you reduce risk and give a high return on application investments. We have successfully achieved top-notch quality standards with a high level of customer appreciation resulting in long lasting relation and large amount of referral work through technological breakthrough and innovative concepts. A large number of our Indian, Overseas and NRI Clients have appreciated our expertise for excellence which speaks volumes about our commitment and dedication to every client's success.



We bring deep, functional expertise, but are known for our holistic perspective: we capture value across boundaries and between the silos of any organization. We have proven a multiplier effect from optimizing the sum of the parts, not just the individual pieces. We actively encourage a culture of innovation, which facilitates the development of new technologies and ensures a high quality product.



What do we offer?

- *Project Identification*
- *Detailed Project Reports/Pre-feasibility Reports*
- *Market Research Reports*
- *Business Plan*
- *Technology Books and Directory*
- *Industry Trend*
- *Databases on CD-ROM*
- *Laboratory Testing Services*
- *Turnkey Project Consultancy/Solutions*
- *Entrepreneur India (An Industrial Monthly Journal)*

How are we different ?

- *We have two decades long experience in project consultancy and market research field*
- *We empower our customers with the prerequisite know-how to take sound business decisions*
- *We help catalyze business growth by providing distinctive and profound market analysis*
- *We serve a wide array of customers , from individual entrepreneurs to Corporations and Foreign Investors*
- *We use authentic & reliable sources to ensure business precision*

Our Approach

Requirement collection

Thorough analysis of the project

Economic feasibility study of the Project

Market potential survey/research

Report Compilation

Contact us

NIIR PROJECT CONSULTANCY SERVICES

106-E, Kamla Nagar, Opp. Spark Mall,
New Delhi-110007, India.

Email: npcs.ei@gmail.com , info@entrepreneurindia.co

Tel: +91-11-23843955, 23845654, 23845886, 8800733955

Mobile: +91-9811043595

Fax: +91-11-23845886

Website : www.entrepreneurindia.co , www.niir.org

Take a look at NIIR PROJECT CONSULTANCY SERVICES on #StreetView

<https://goo.gl/VstWkd>



Follow us



➤ <https://www.linkedin.com/company/niir-project-consultancy-services>



➤ <https://www.facebook.com/NIIR.ORG>



➤ <https://www.youtube.com/user/NIIRproject>



➤ <https://plus.google.com/+EntrepreneurIndiaNewDelhi>



➤ https://twitter.com/npcs_in



➤ <https://www.pinterest.com/npcsindia/>





For more information, visit us at:

www.niir.org

www.entrepreneurindia.co



www.entrepreneurindia.co